

Draft

Draft

Draft

First Look at New MAP Data

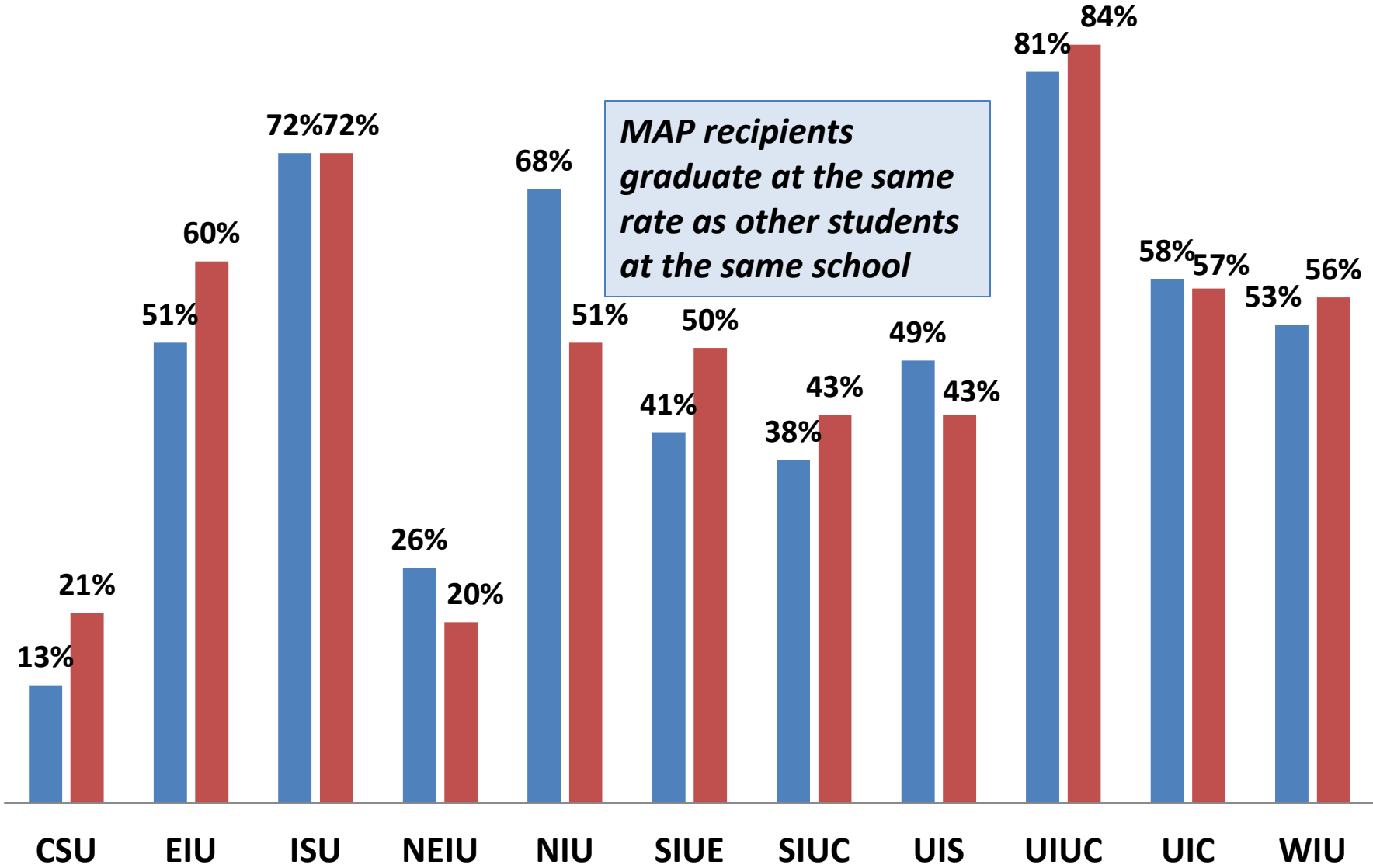
Graduation Rates

The FAFSA Completion Program

Grant Aid Distributions

FY2015 Public University Graduation Rates

■ MAP same school 6 yr ■ IPEDS 6 yr

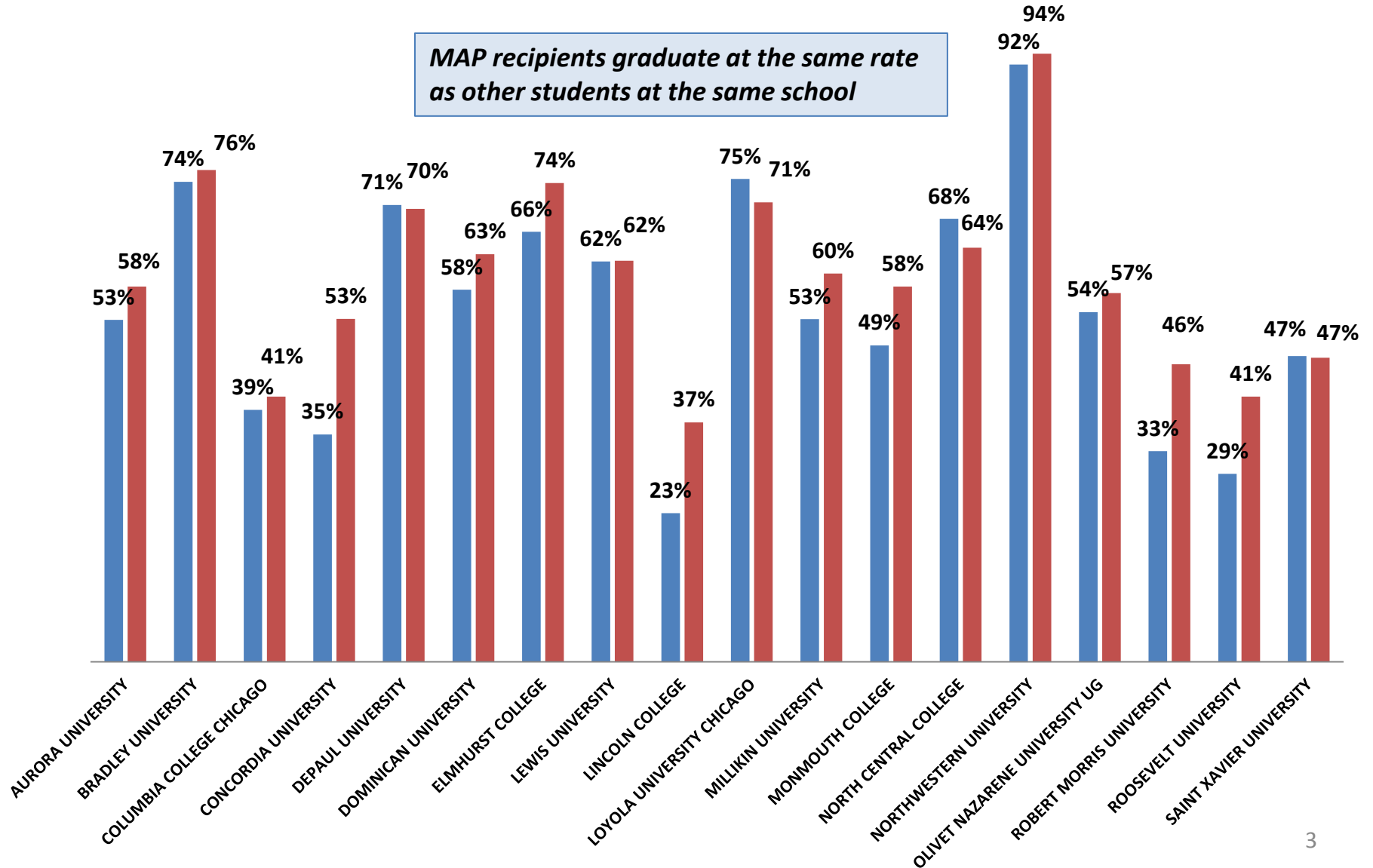


2015 MAP Recipient Graduation Rates

Private Nonprofit Institutions with more than 100 MAP recipients

■ MAP Recipient Graduation Rate ■ IPEDS 6-yr School Graduation Rate

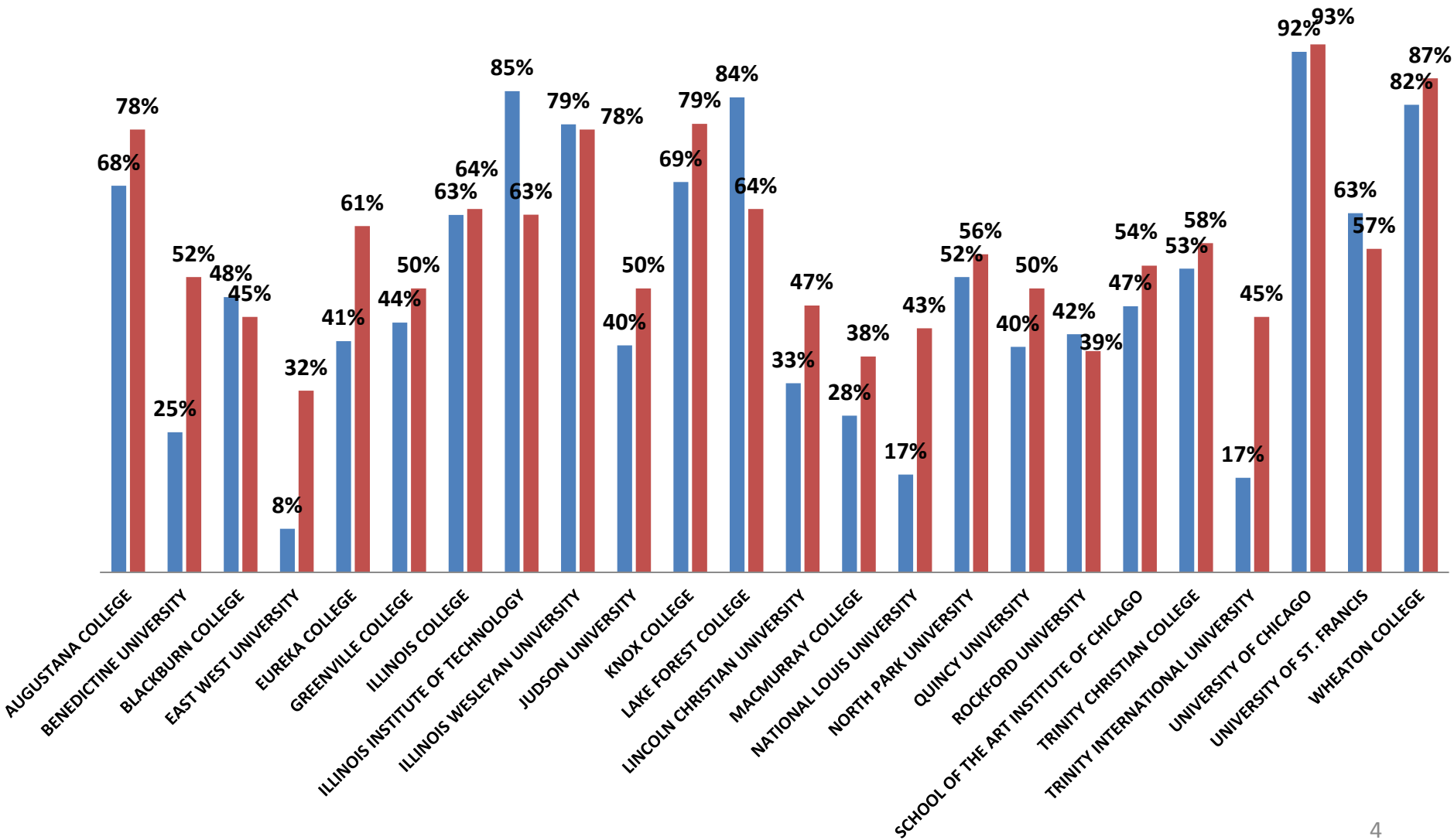
MAP recipients graduate at the same rate as other students at the same school



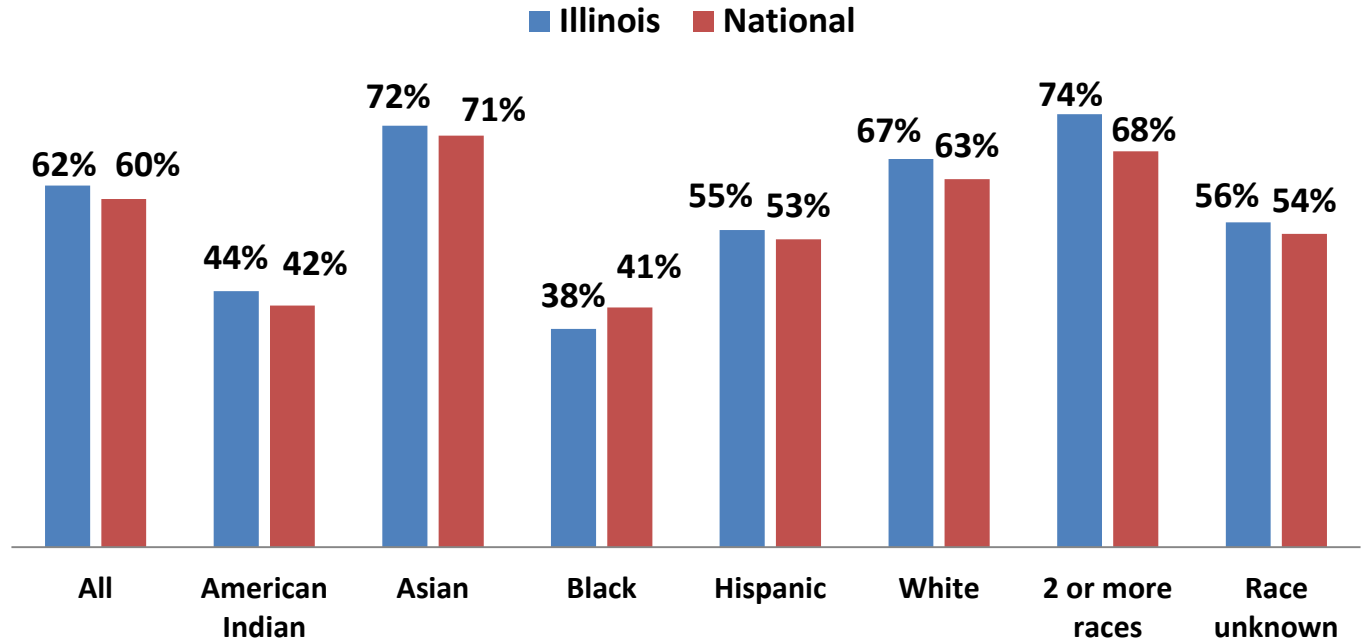
2015 MAP Recipient Graduation Rates

Private Nonprofit Institutions with less than 100 MAP recipients

■ MAP Recipient Graduation Rate ■ IPEDS 6-yr School Graduation Rate



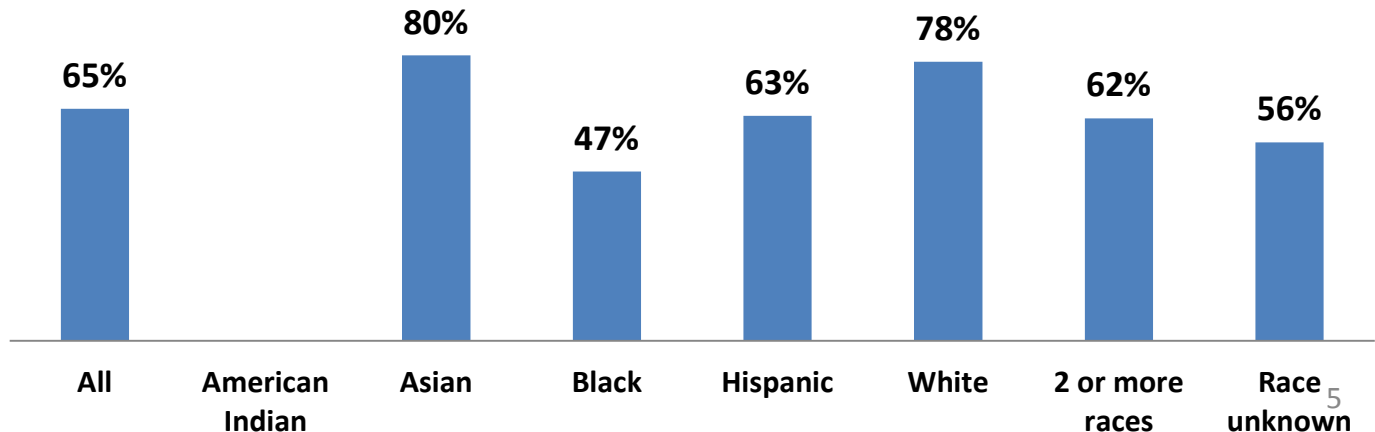
6-Year Graduation Rates for Four-Year Institutions, 2015



The six year graduation rate for MAP recipients at four-year institutions is about the same as for all students.

Achievement gaps exist for MAP students but they are smaller than those for Illinois overall.

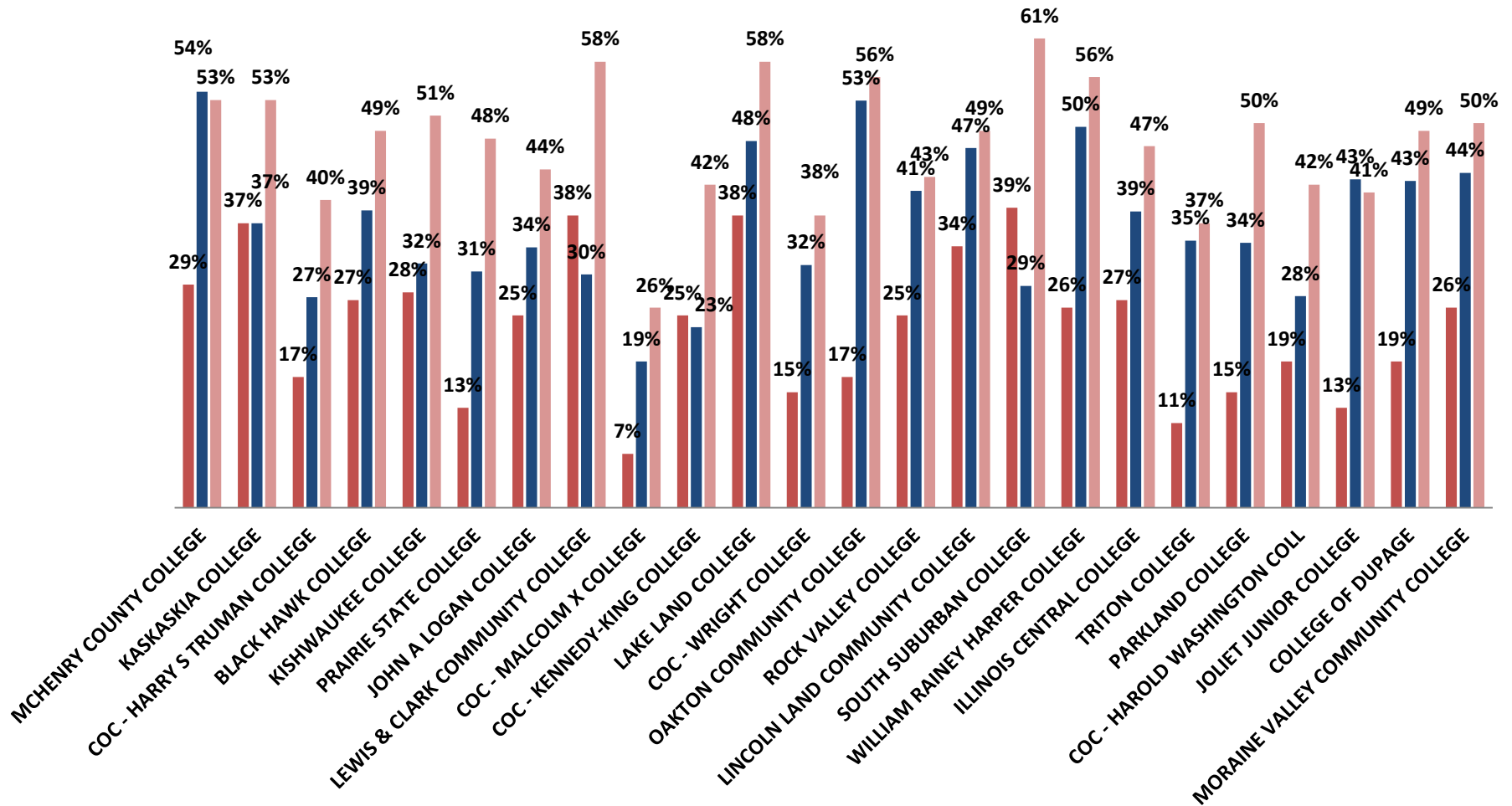
Graduation Rates for MAP Recipients at Public Universities and Four-Year Private Institutions, 2015



2015 CC MAP Recipient Graduation Rates compared to School Graduation and Transfer Rates for schools with more than 250 MAP recipients

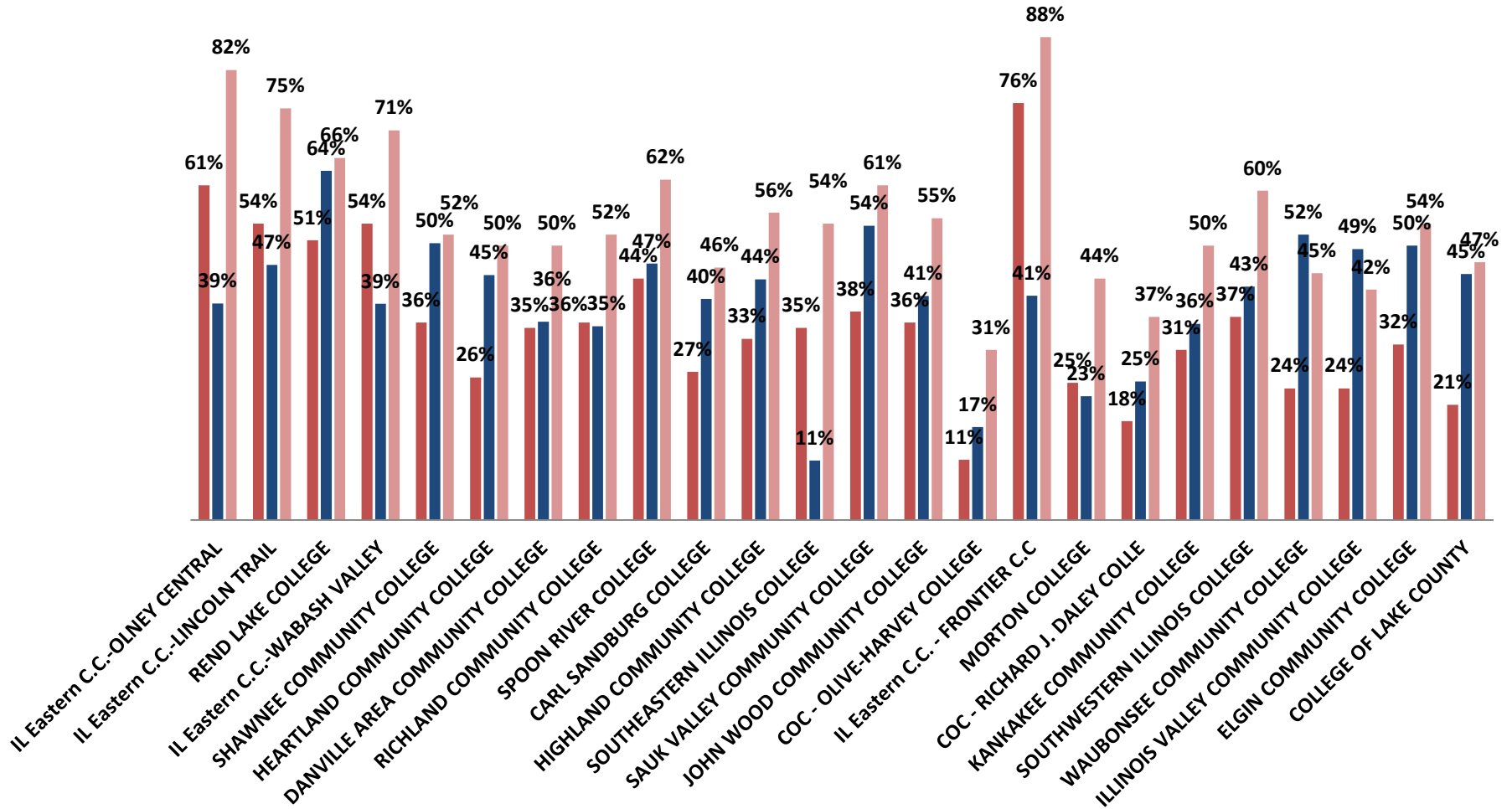
MAP recipients are performing as well as other students at the same community college

■ IPEDS Graduation rate ■ MAP Recipients - any degree w/in 6 YRS ■ IPEDS Graduation rate + transfer rate



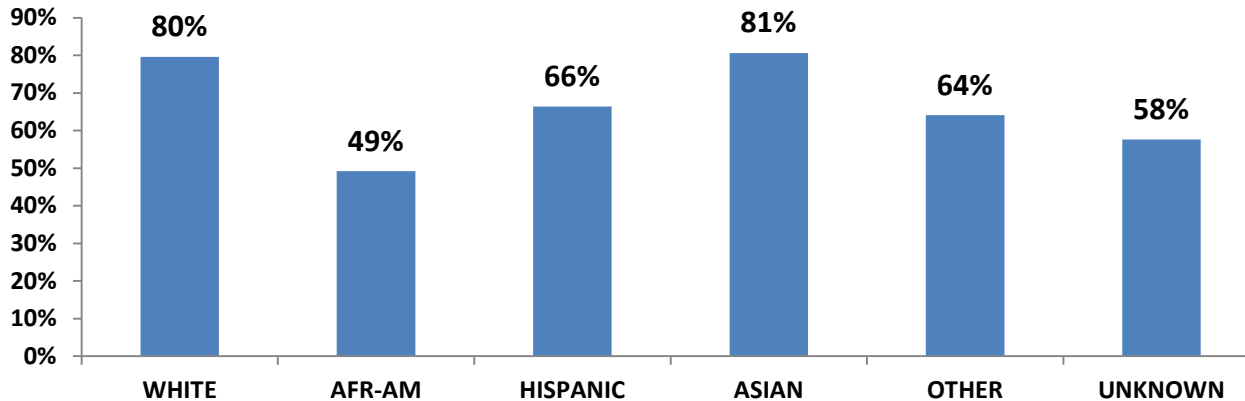
2015 CC MAP Recipient Graduation Rates compared to School Graduation and Transfer Rates for schools with less than 250 MAP recipients

■ IPEDS Graduation rate
 ■ MAP Recipients - any degree w/in 6 YRS
 ■ IPEDS Graduation rate + transfer rate



DEGREE STATUS OF **DEPENDENT** FULL-TIME MAP RECIPIENTS BY RACE (Matched with Clearinghouse Data through FY2015)

Dependent FT MAP Recipient **Public University** Graduation Rate (any degree in 6 yrs)

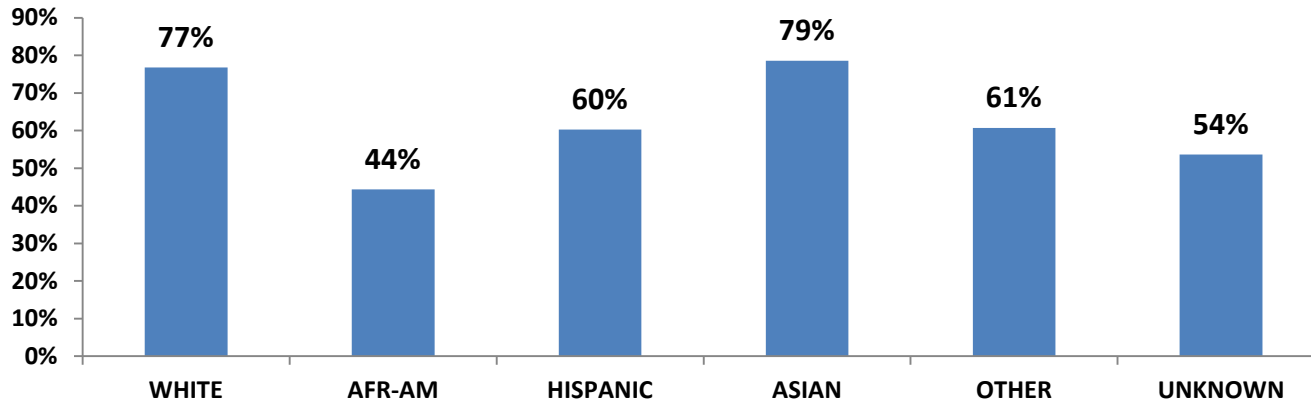


66% of MAP recipients at public universities completed their programs in 6 years or less

FY2010 STARTING AT PUBLIC 4-YR							
status in 6 years - sector of last degree							
RACE	Public2	Public4	Private4	Other	still in school > 6 years	no degree	any degree in 6 yrs
WHITE	6%	70%	3%	0%	0%	20%	80%
AFR-AM	5%	41%	2%	1%	0%	51%	49%
HISPANIC	8%	55%	3%	1%	0%	33%	66%
ASIAN	3%	73%	5%	1%	0%	19%	81%
OTHER	6%	55%	3%	1%	0%	36%	64%
UNKNOWN	5%	48%	4%	1%	0%	42%	58%
Total	6%	57%	3%	1%	0%	34%	66%

DEGREE STATUS OF **DEPENDENT** FULL-TIME MAP RECIPIENTS BY RACE (Matched with Clearinghouse Data through FY2015)

Dependent FT MAP Recipient **Private 4-Year** College Graduation Rate (any degree in 6 yrs)

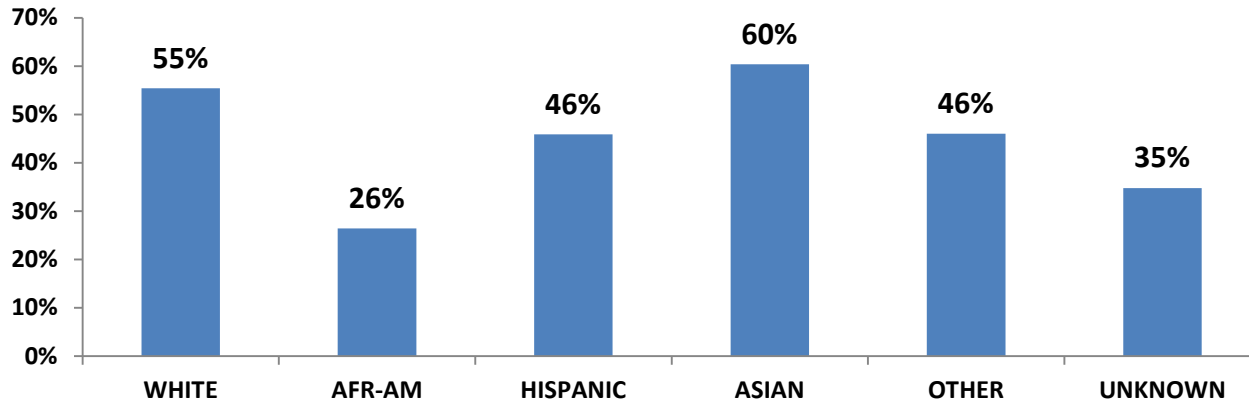


64% of MAP recipients at private NFP institutions completed their programs in 6 years or less

RACE	FY2010 STARTING AT PRIVATE 4-YR						
	status in 6 years - sector of last degree						
	Public2	Public4	Private4	Other	still in school > 6 years	no degree	any degree in 6 yrs
WHITE	5%	4%	68%	0%	0%	23%	77%
AFR-AM	5%	4%	34%	1%	0%	55%	44%
HISPANIC	4%	3%	53%	1%	0%	39%	60%
ASIAN	3%	5%	70%	0%	1%	20%	79%
OTHER	4%	4%	52%	0%	1%	39%	61%
UNKNOWN	4%	4%	45%	0%	1%	46%	54%
Total	4%	4%	55%	0%	0%	36%	64%

DEGREE STATUS OF **DEPENDENT** FULL-TIME MAP RECIPIENTS BY RACE (Matched with Clearinghouse Data through FY2015)

Dependent FT MAP Recipient **Community College** Graduation Rate (any degree in 6 yrs)



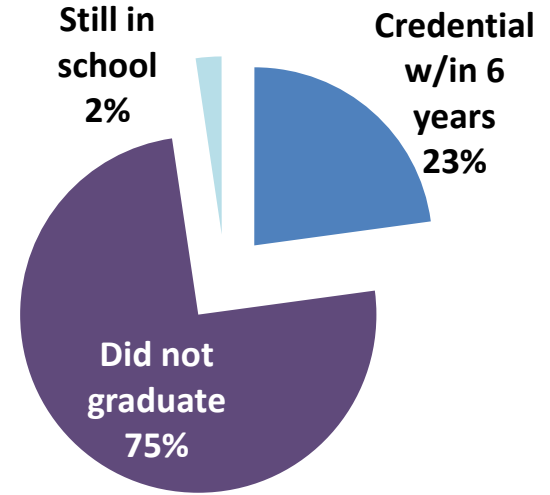
44% of MAP recipients at community colleges completed their programs in 6 years or less

FY2010 STARTING AT PUBLIC 2-YR							
status in 6 years - sector of last degree							
RACE	Public2	Public4	Private4	Other	still in school > 6 years	no degree	any degree in 6 yrs
WHITE	30%	12%	13%	0%	5%	39%	55%
AFR-AM	14%	6%	5%	2%	2%	72%	26%
HISPANIC	26%	7%	10%	2%	2%	52%	46%
ASIAN	21%	22%	18%	0%	8%	31%	60%
OTHER	24%	11%	11%	1%	4%	50%	46%
UNKNOWN	22%	6%	6%	1%	3%	62%	35%
Total	24%	9%	9%	1%	4%	52%	44%

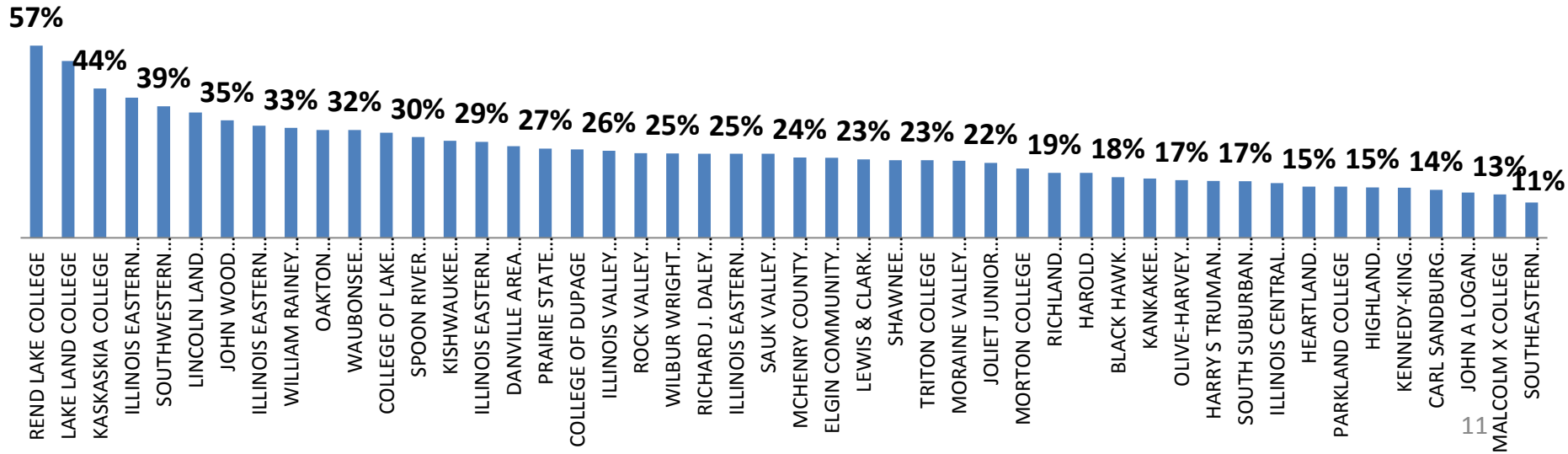
Graduation Rates of Part-time MAP Recipients at Community Colleges, 2015

both dependent and independent

1,743 began as part-time students
 1,304 left school, did not graduate
 398 obtained credential
 41 still in school
23% overall completion rate

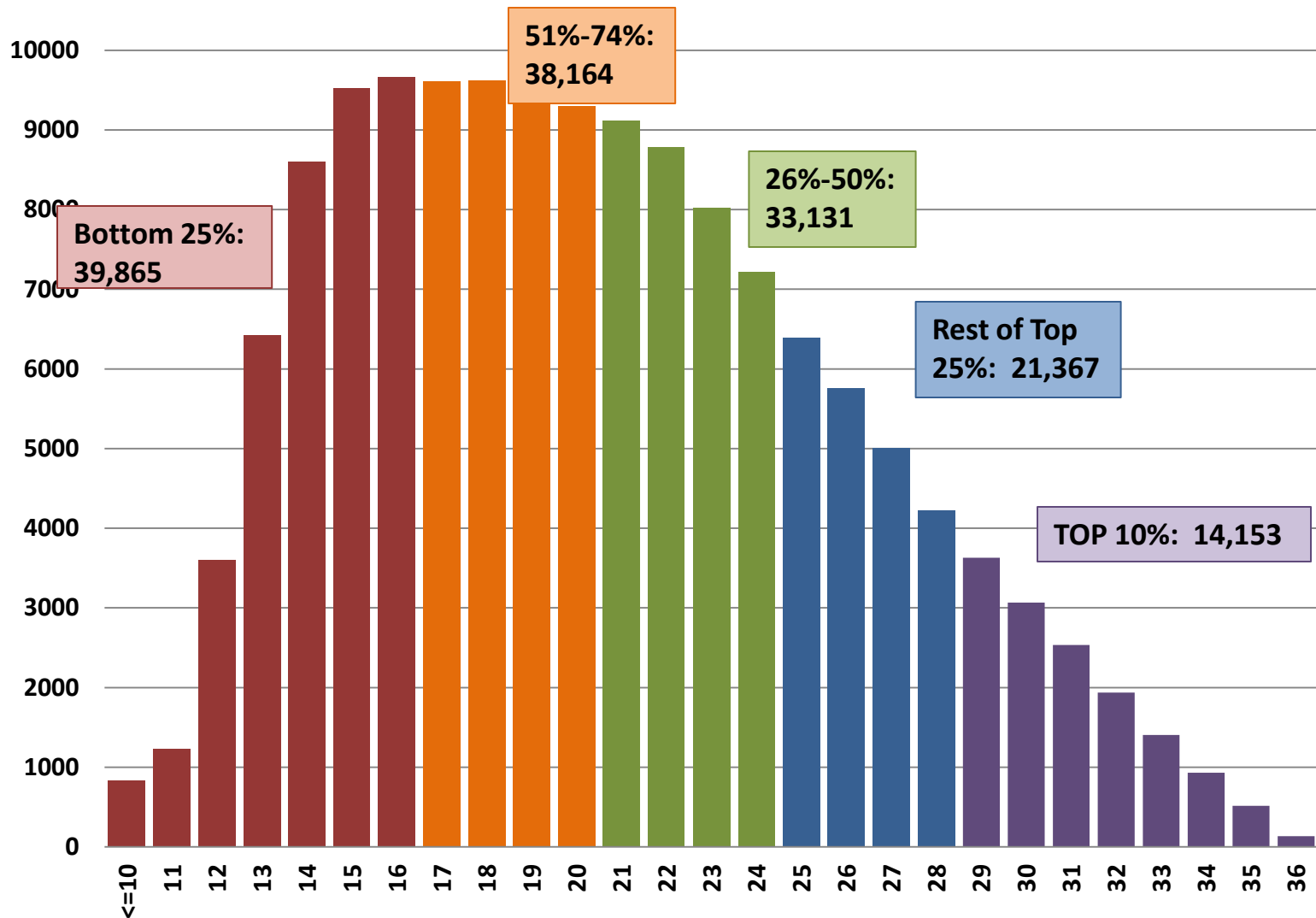


ANY DEGREE 6 YRS



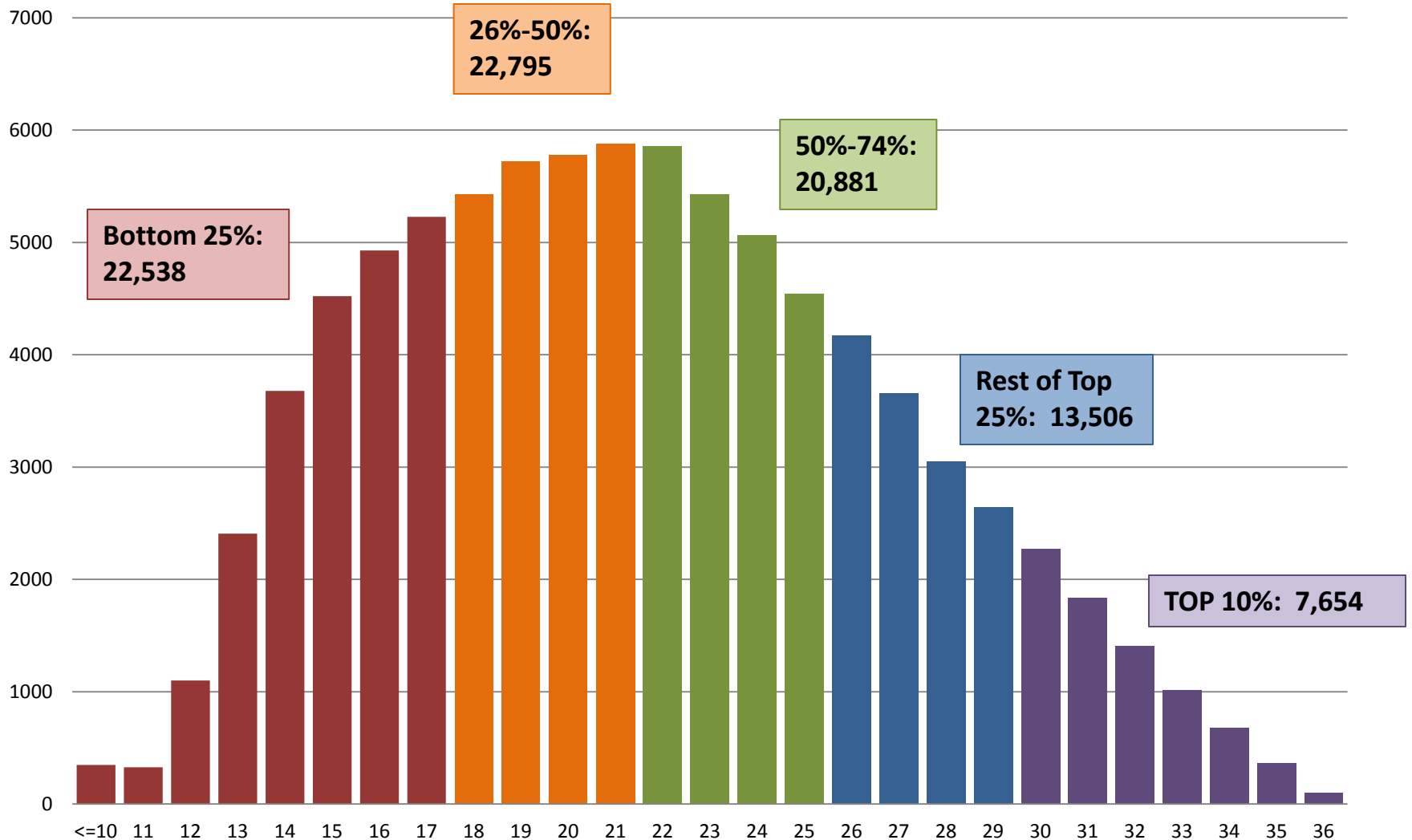
2009 IL ACT Composite Score Distribution

146,680 test takers



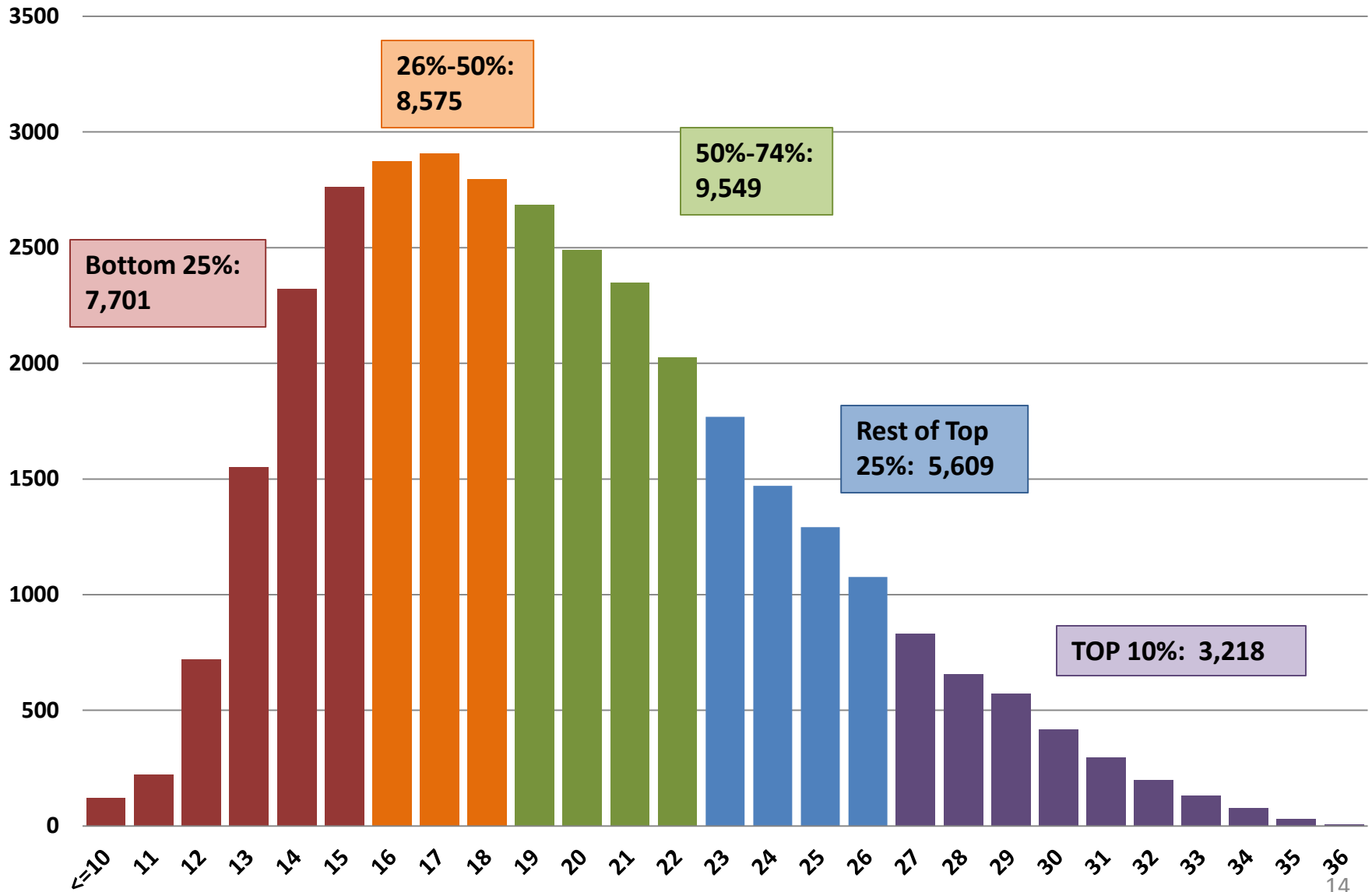
IL ACT Composite Score Distribution

87,374 2009 HS Grad FY10 FAFSA Filers



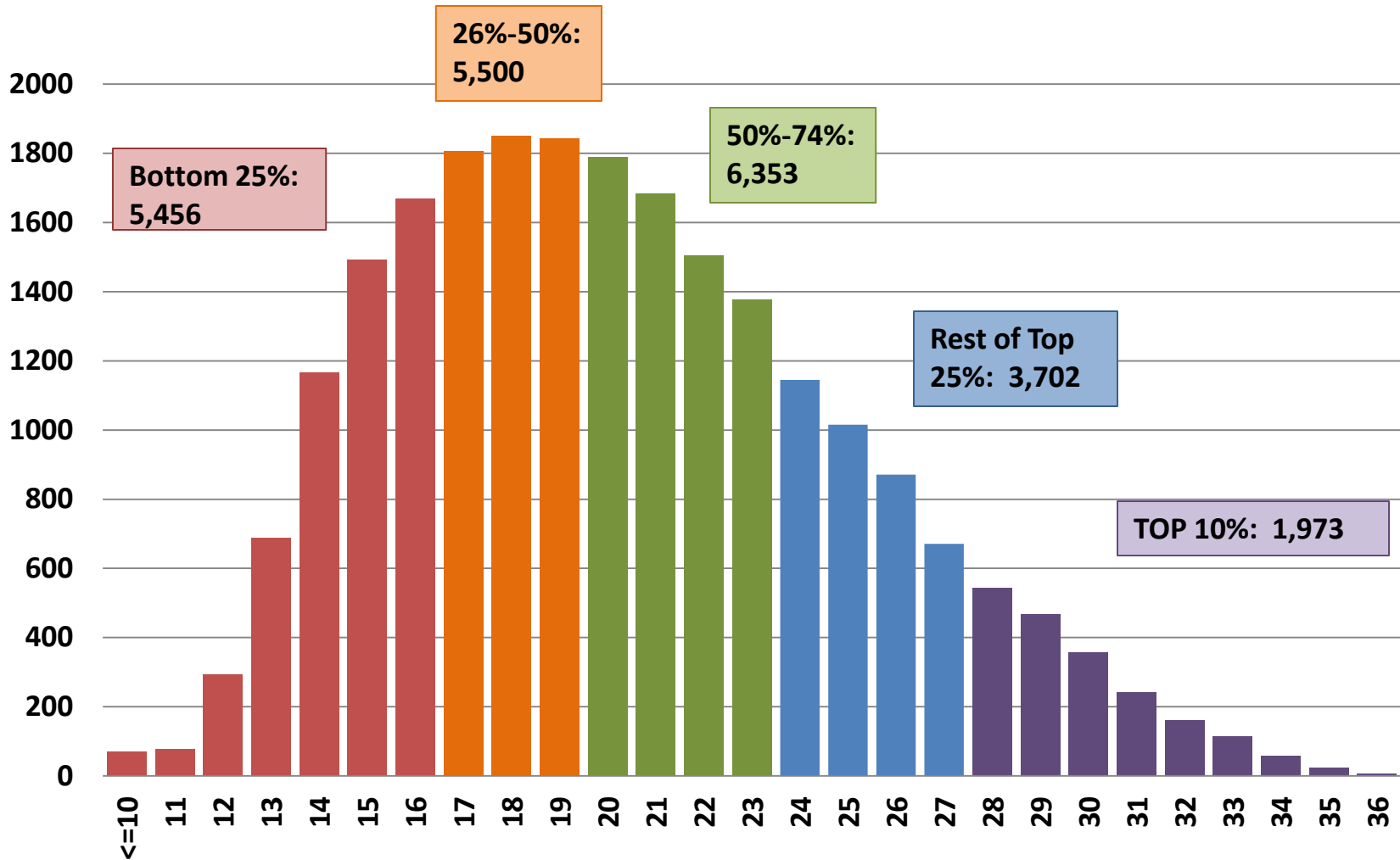
IL ACT Composite Score Distribution

34,652 2009 HS Grad FY10 MAP Eligibles



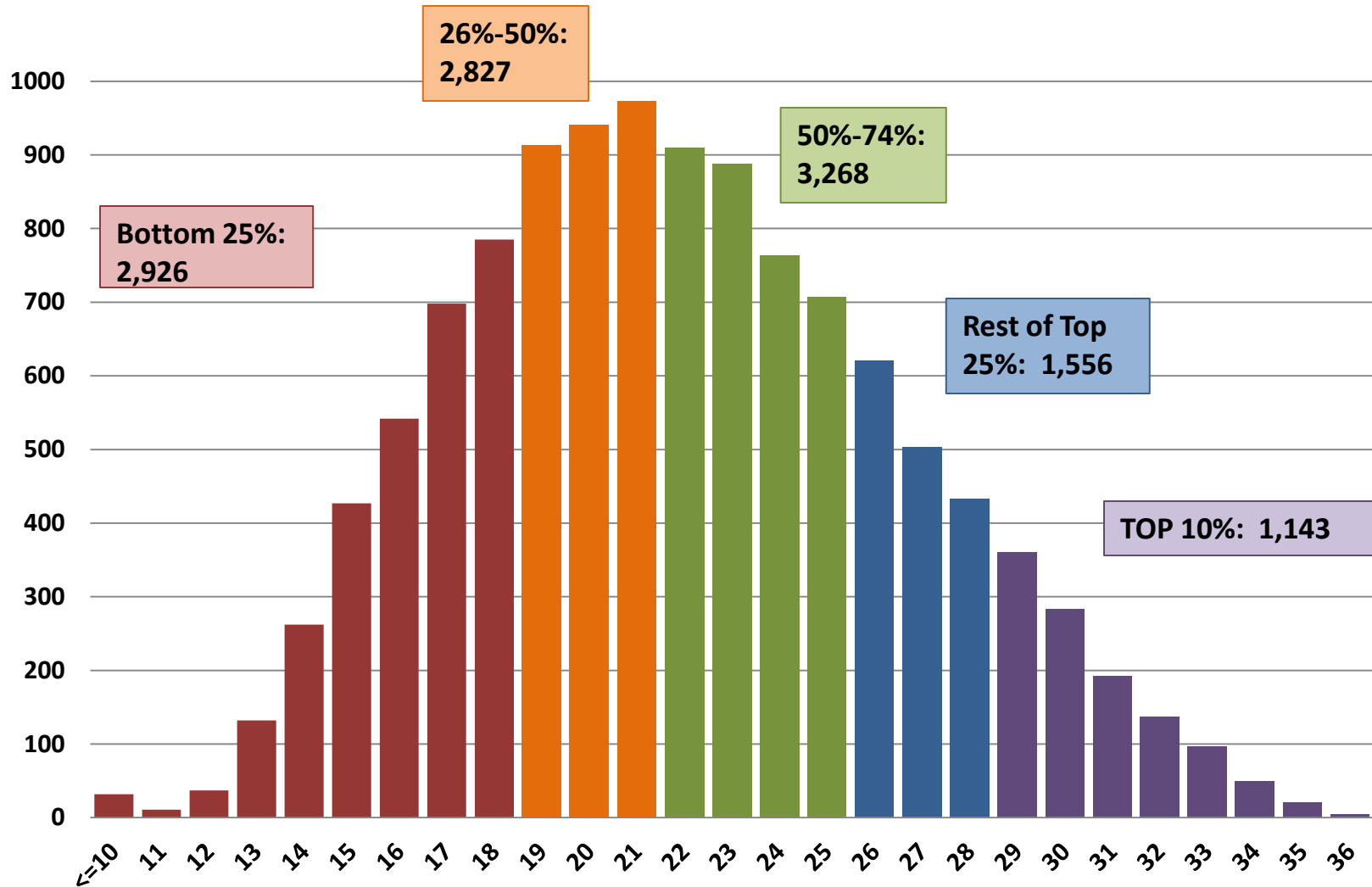
IL ACT Composite Score Distribution

22,984 2009 HS Grad FY10 MAP Recipients



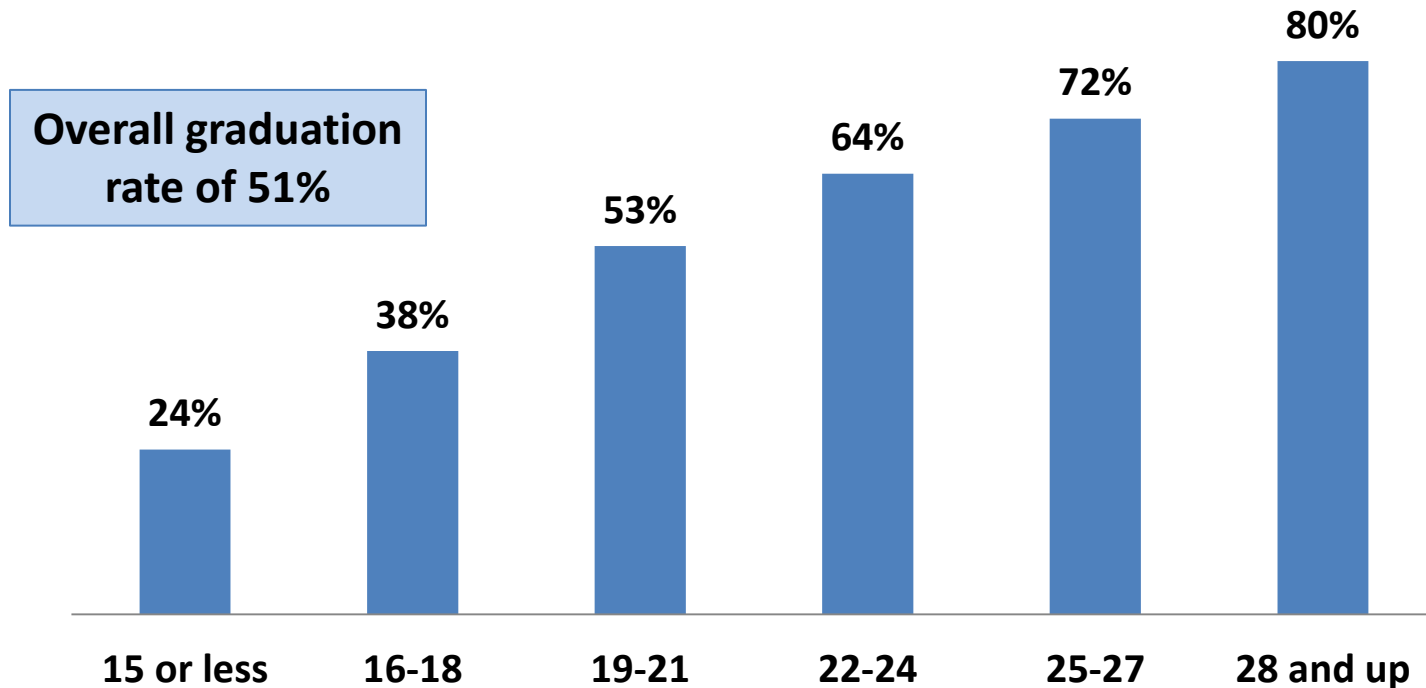
IL ACT Composite Score Distribution

11,720 2009 HS Grad MAP Earned Degree or Credential by FY15



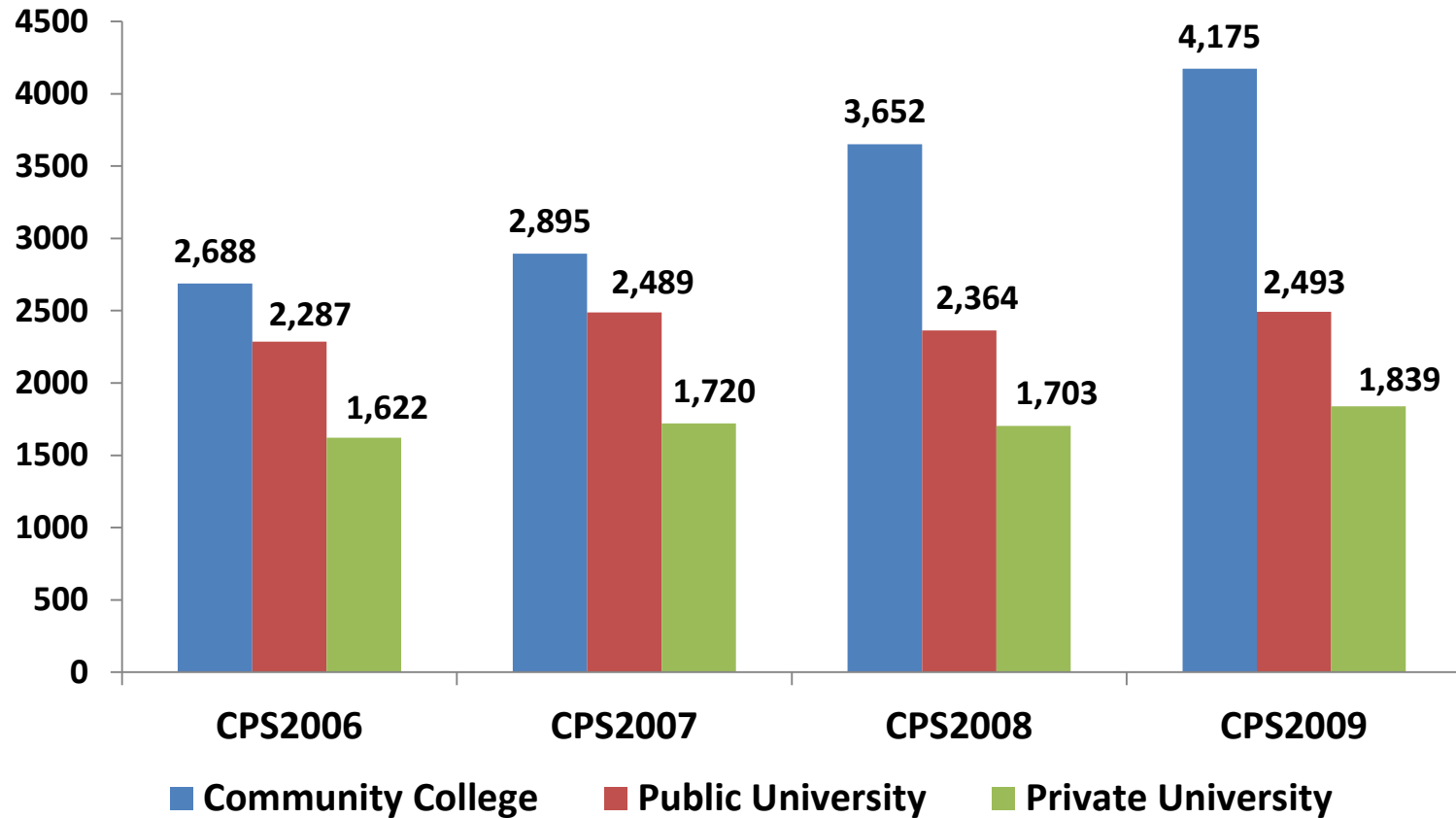
Percent of 2015 (2010 cohort) MAP Recipients Who Graduated by ACT Score

Percent of MAP Recipients Graduating, by ACT Score



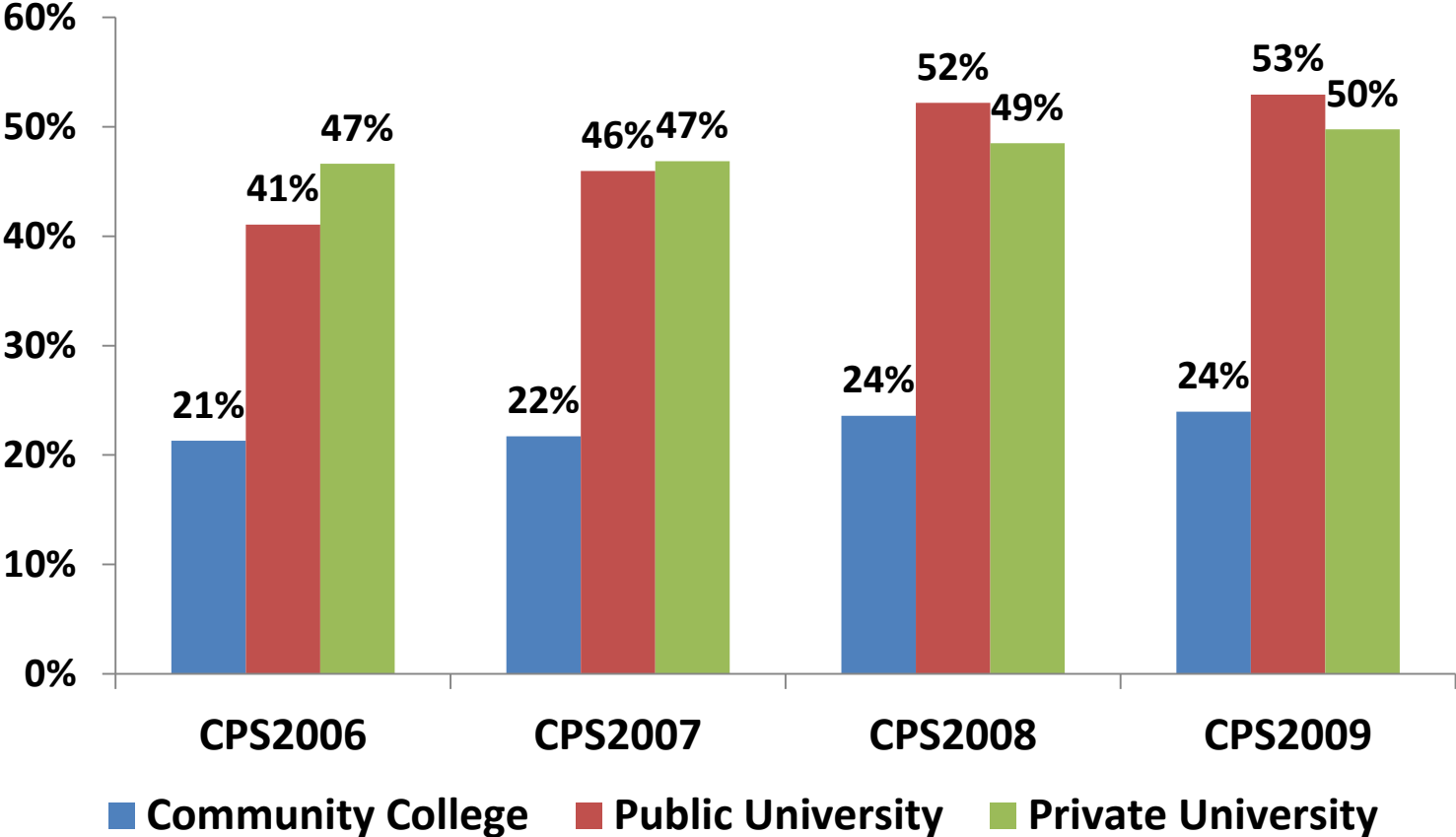
CPS FAFSA Completion Program

Chicago Public School Graduates
Enrolling in College Within a Year of HS Graduation



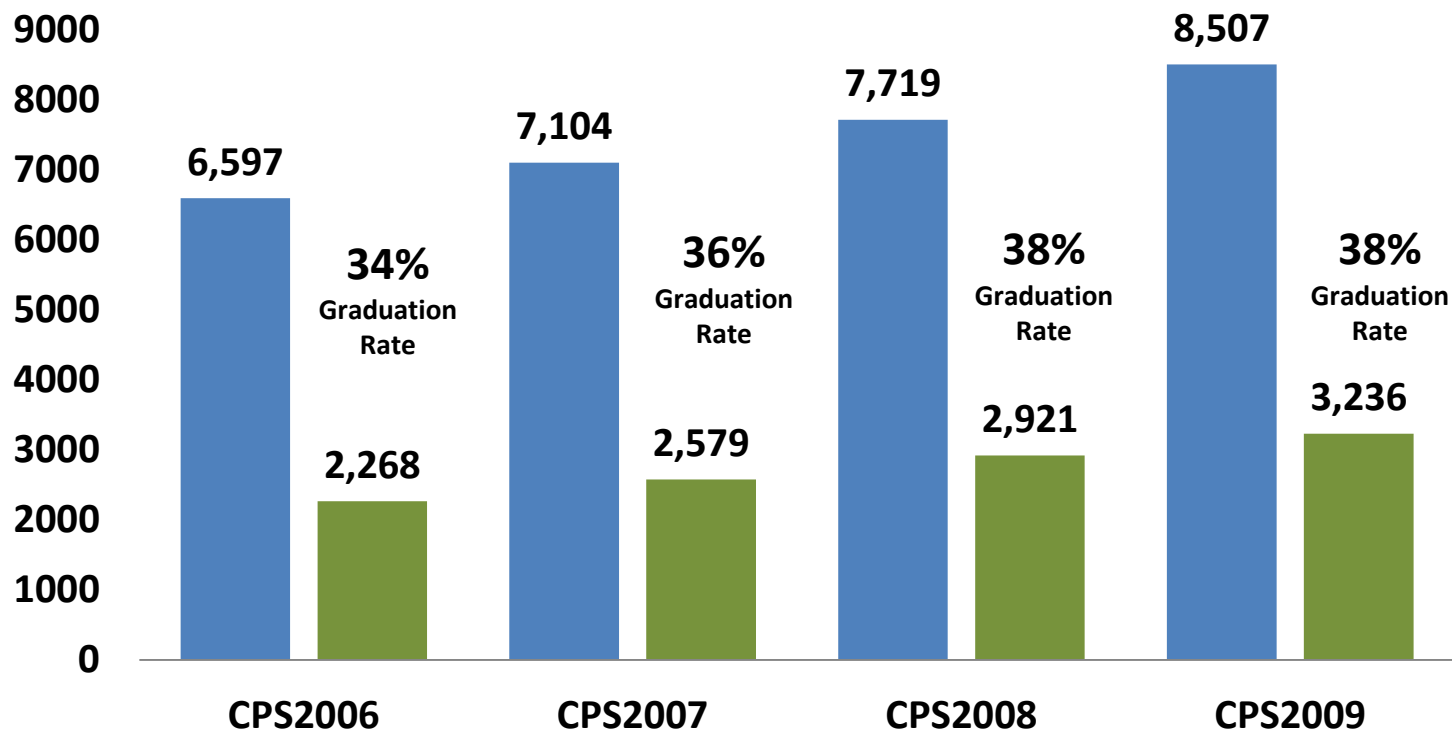
CPS FAFSA Completion Program

Chicago Public School Graduates Earning Degree Within Six Years, by Beginning Sector



FAFSA Completion Project: Chicago Public School Graduates

Chicago Public School Graduates Enrolling in and Graduating from College



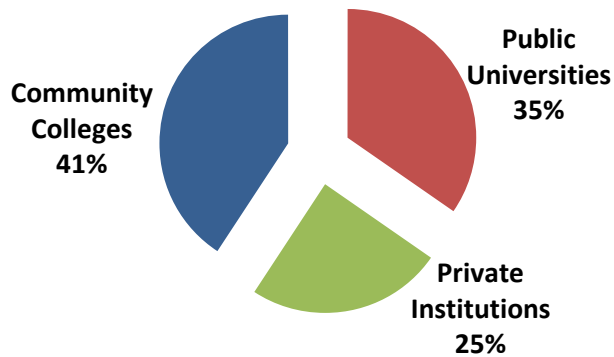
1,910 more
students
attempted
college

968 more
students
completed
their
programs

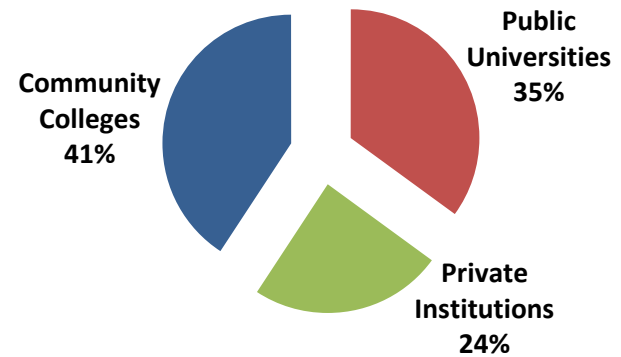
- Enrolled within a year of HS graduation
- Graduated college within 6 years

FAFSA Completion Project: Chicago Public School Graduates

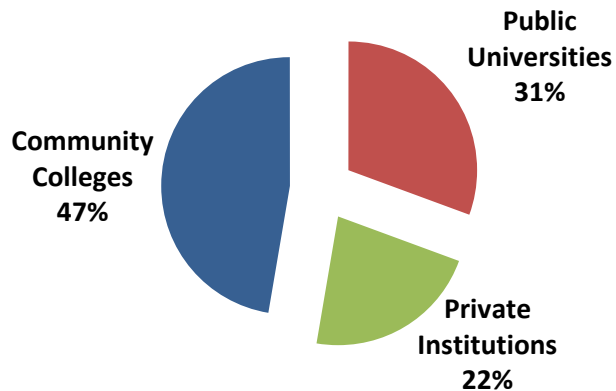
**Where CPS Students Enrolled
2006**



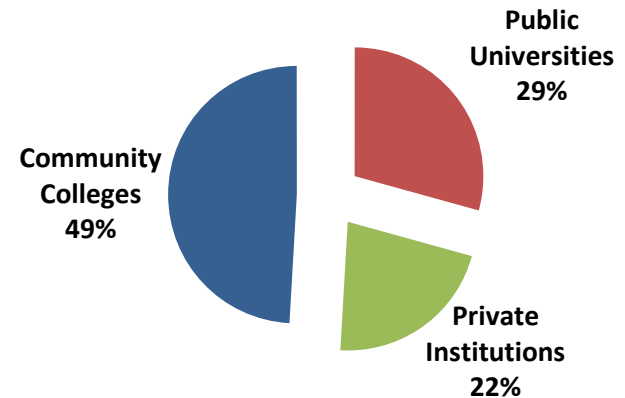
**Where CPS Students Enrolled
2007**



**Where CPS Students Enrolled
2008**

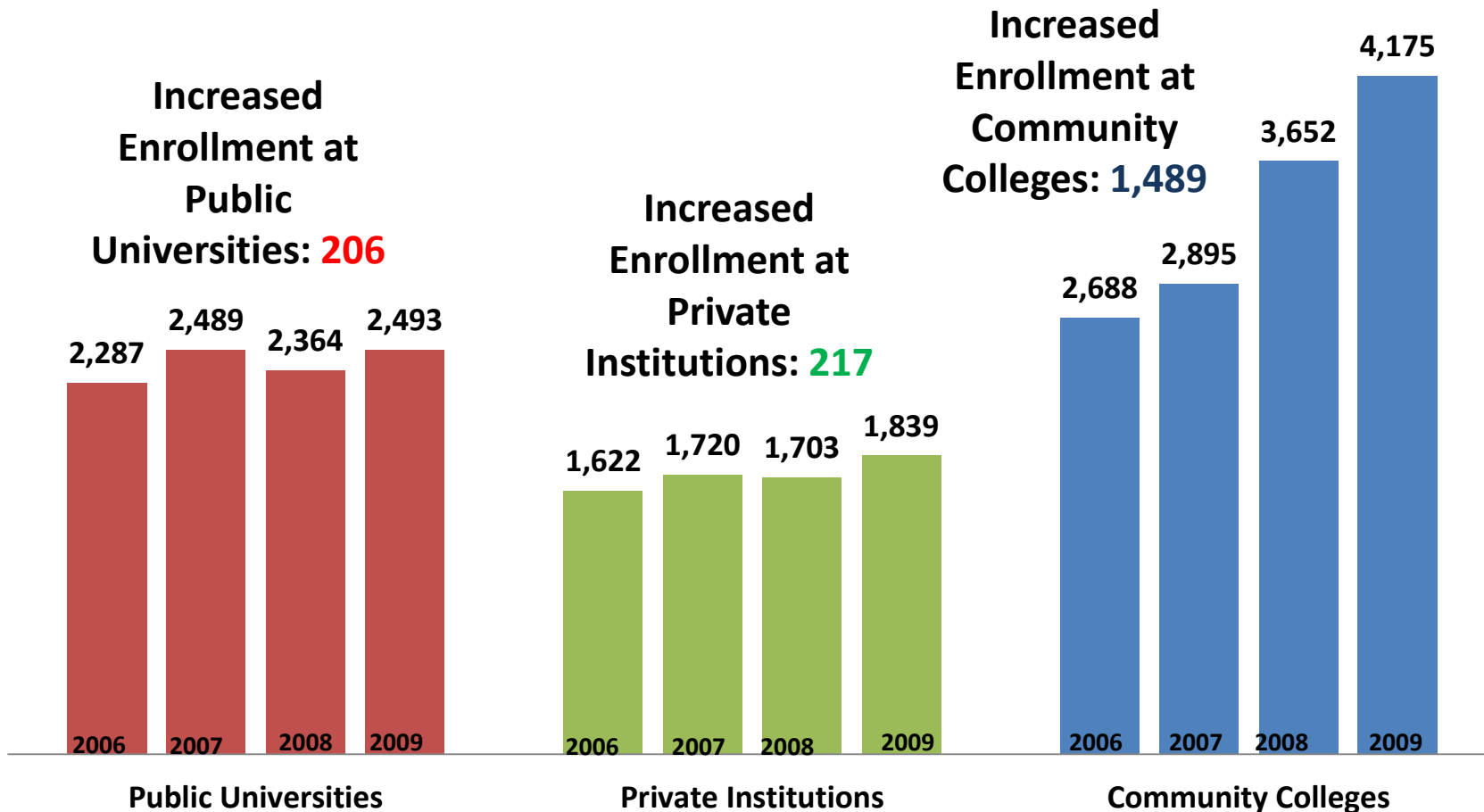


**Where CPS Students Enrolled
2009**



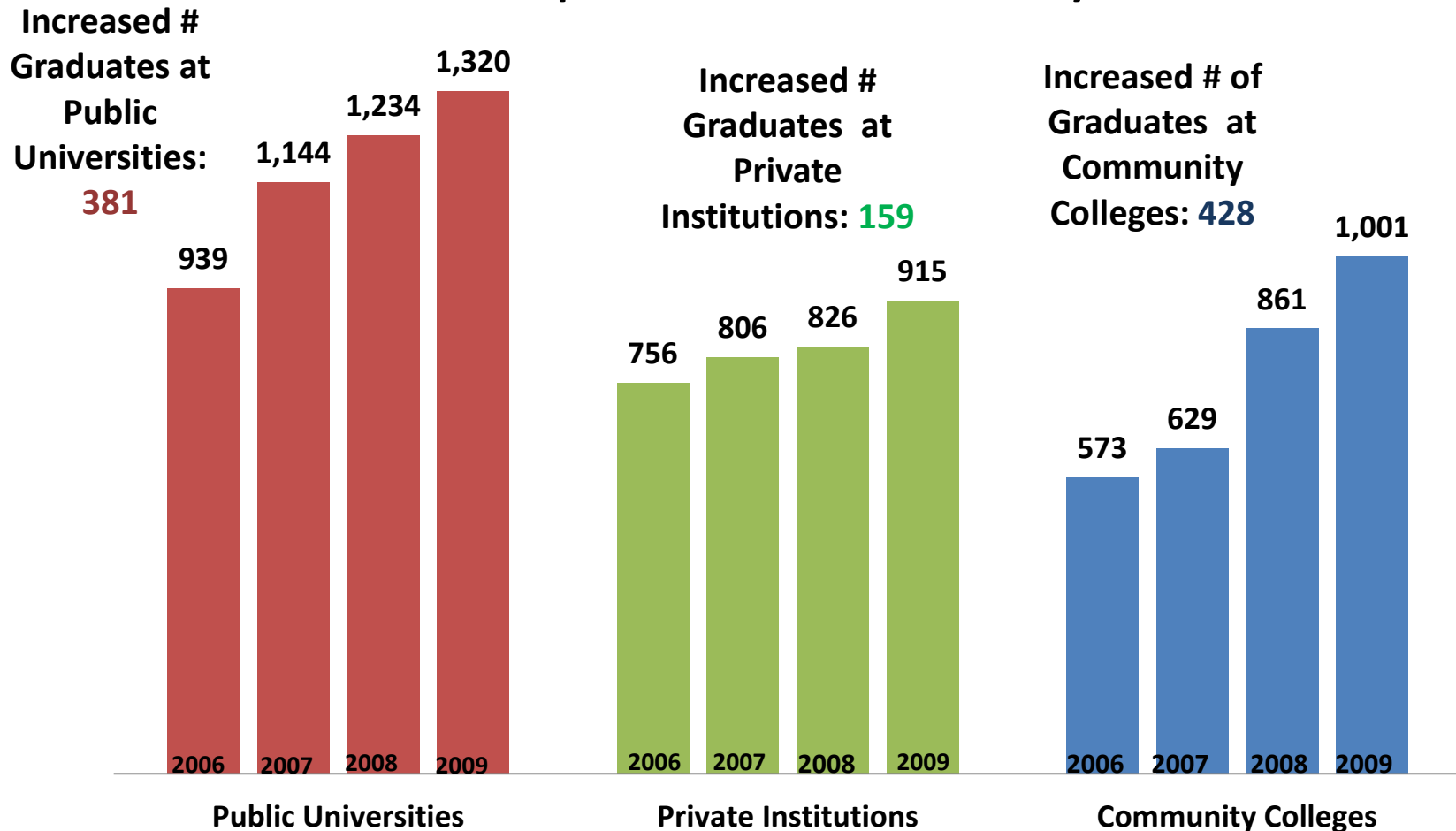
FAFSA Completion Project: Chicago Public School Graduates

Enrollment of CPS Students by Sector



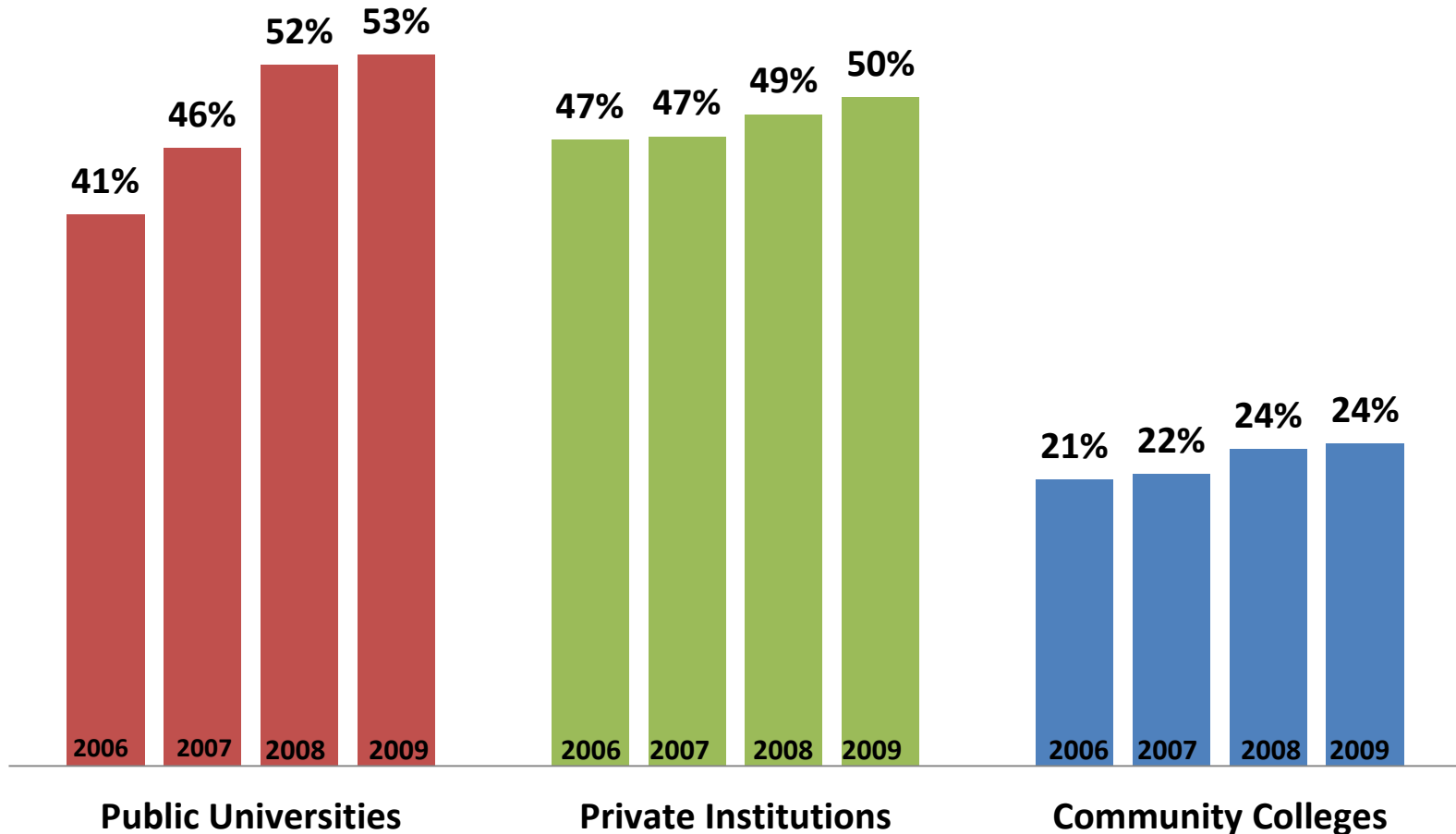
FAFSA Completion Project: Chicago Public School Graduates

Completions of CPS Students by Sector

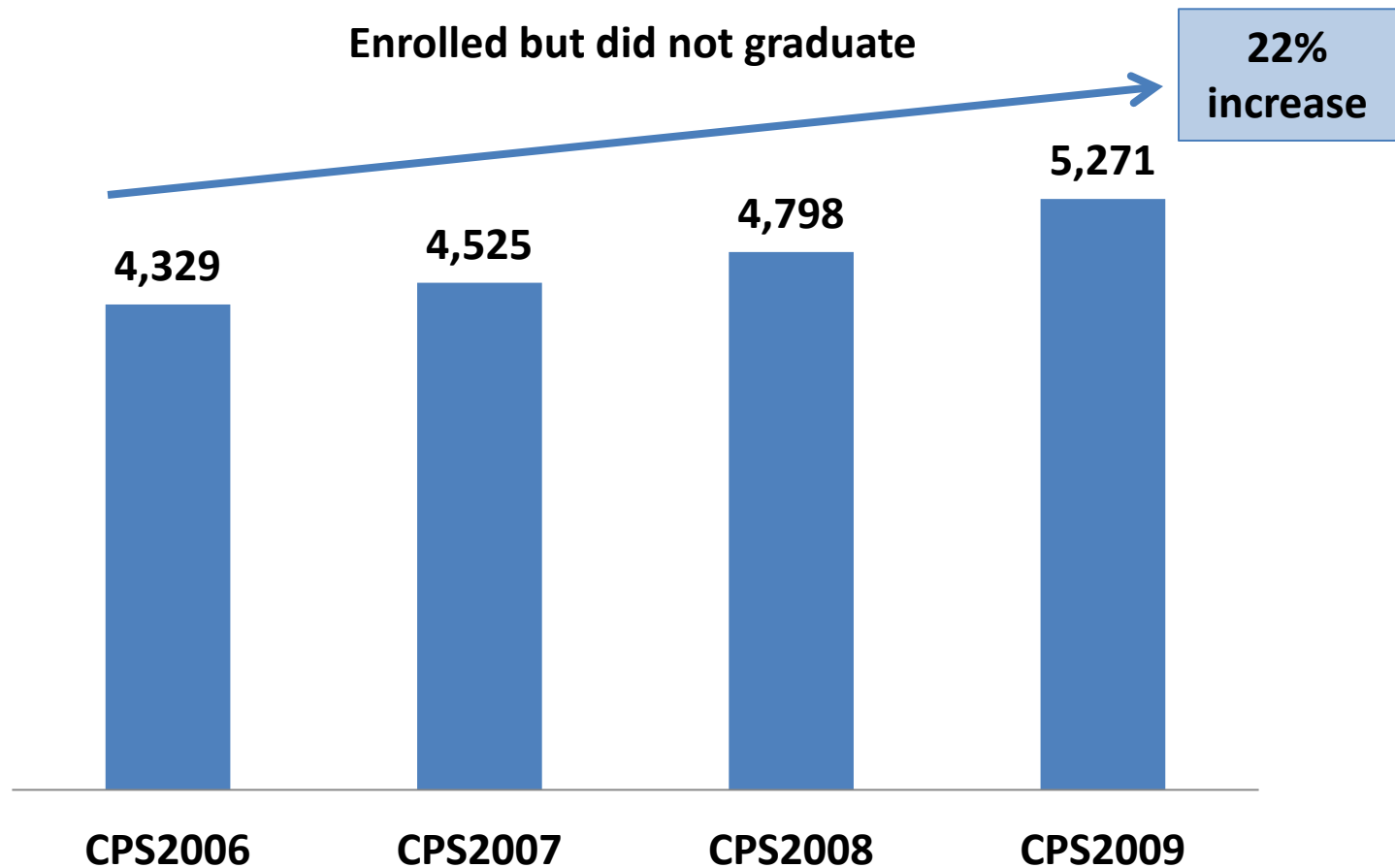


FAFSA Completion Project: Chicago Public School Graduates

College Graduation Rates of CPS Students by Sector

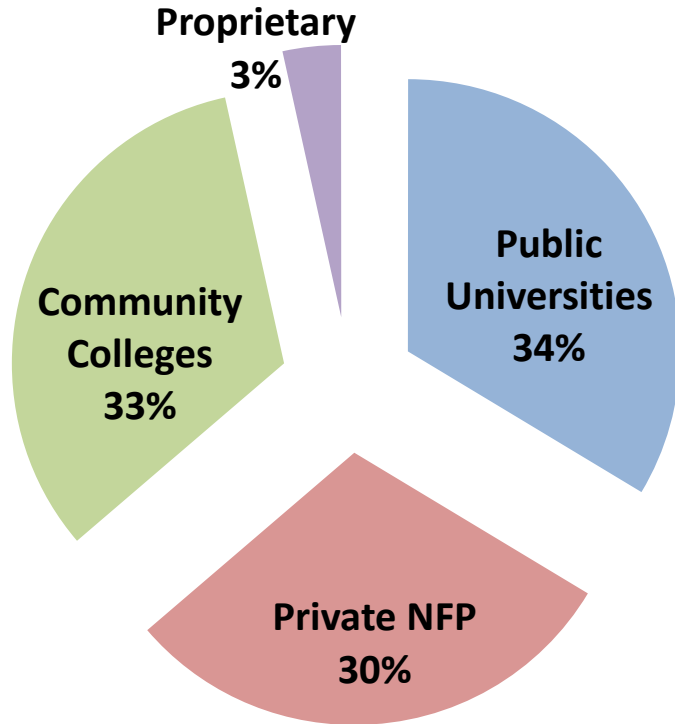


FAFSA Completion Project: Non-completers

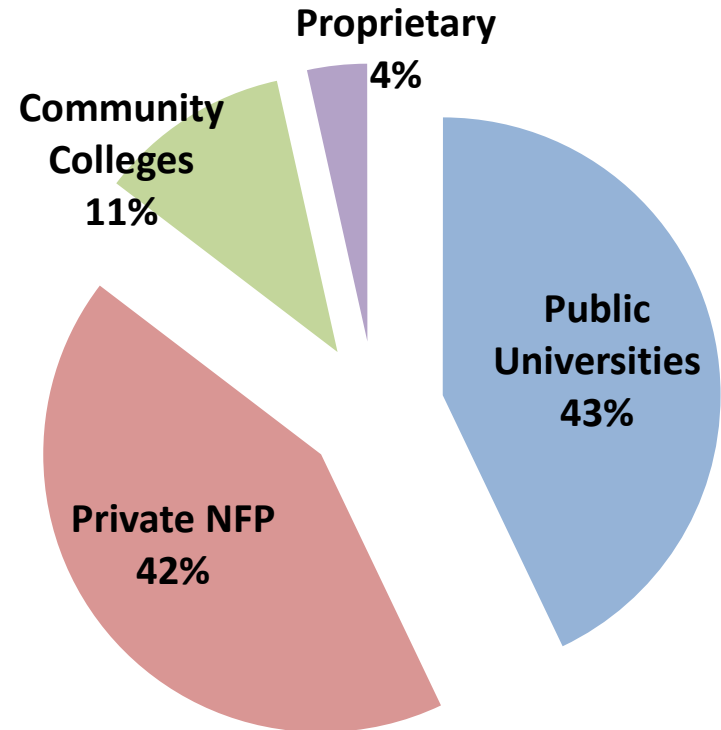


2015 MAP Grant Recipients and Dollars

MAP Recipients

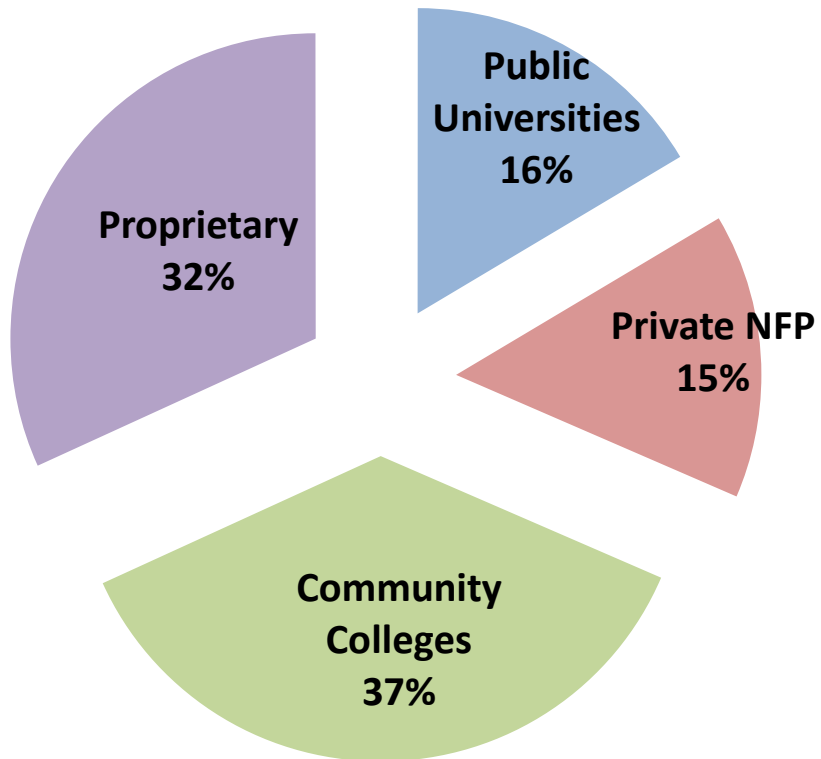


MAP Dollars

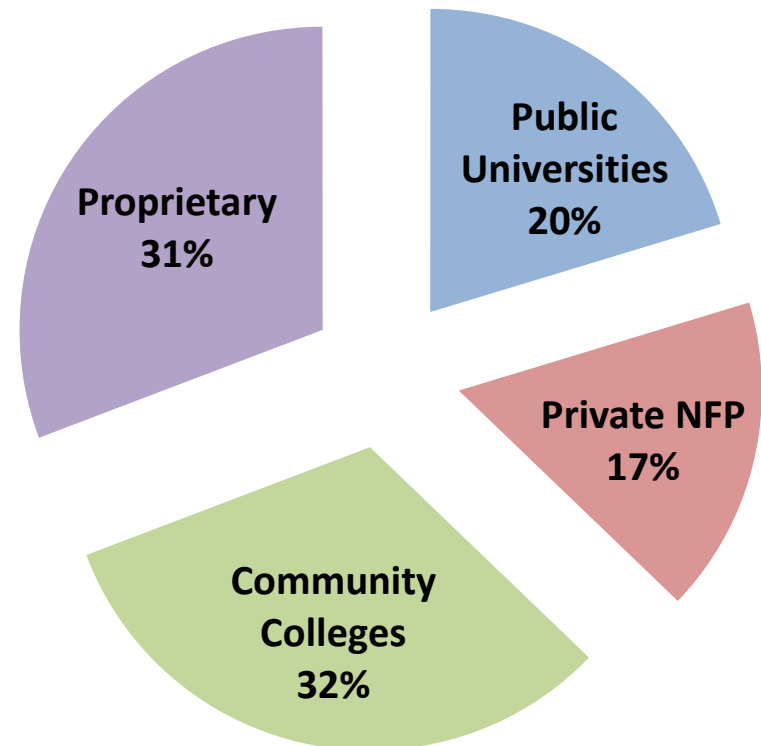


2015 Pell Grant Recipients and Dollars

Recipients

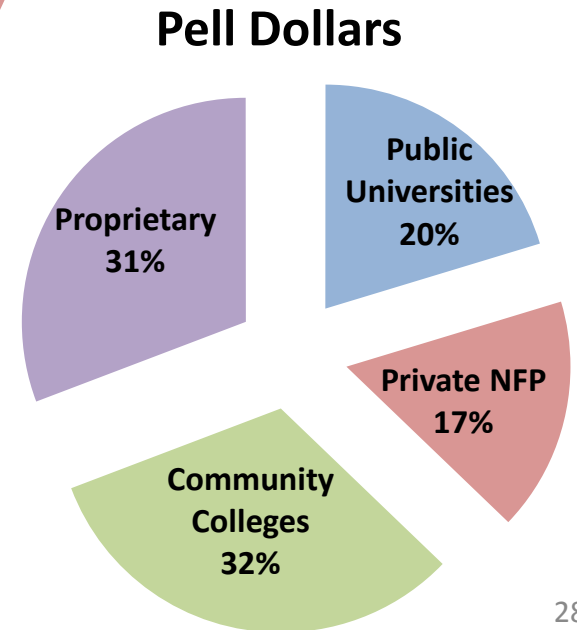
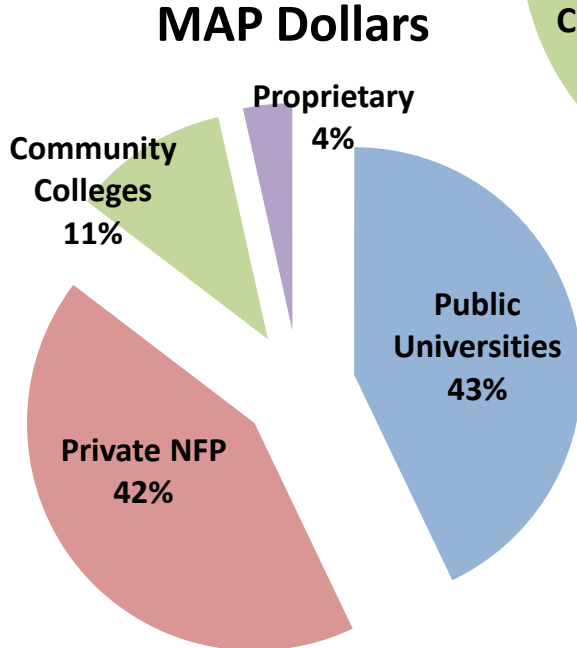
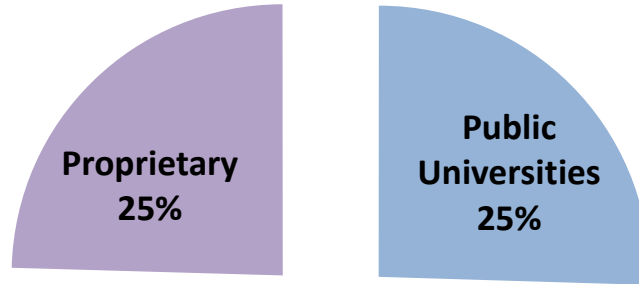


Dollars



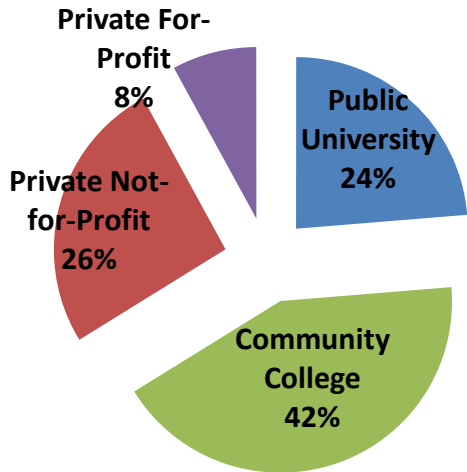
2015 Pell & MAP Grant Dollars

Pell and MAP Dollars

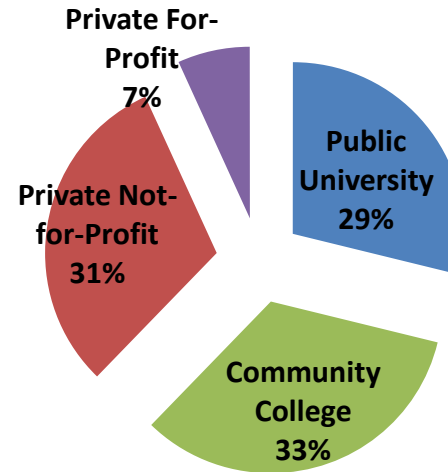


2015 Share of Enrollment Calculations

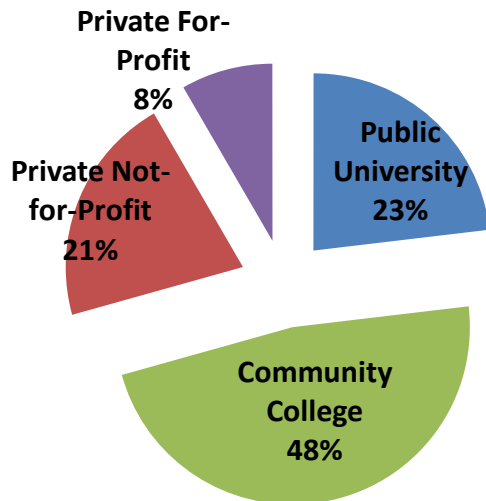
All students



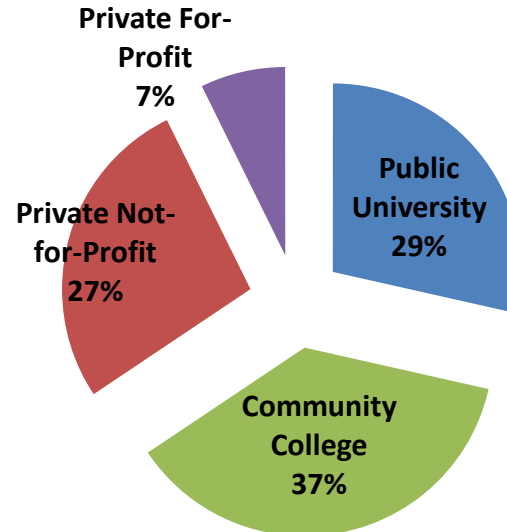
All students, FTE



All undergraduates

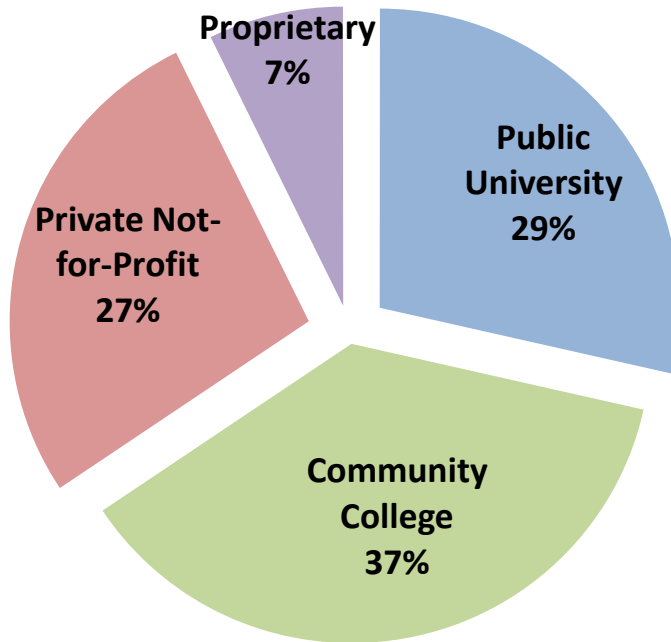


All undergraduates, FTE

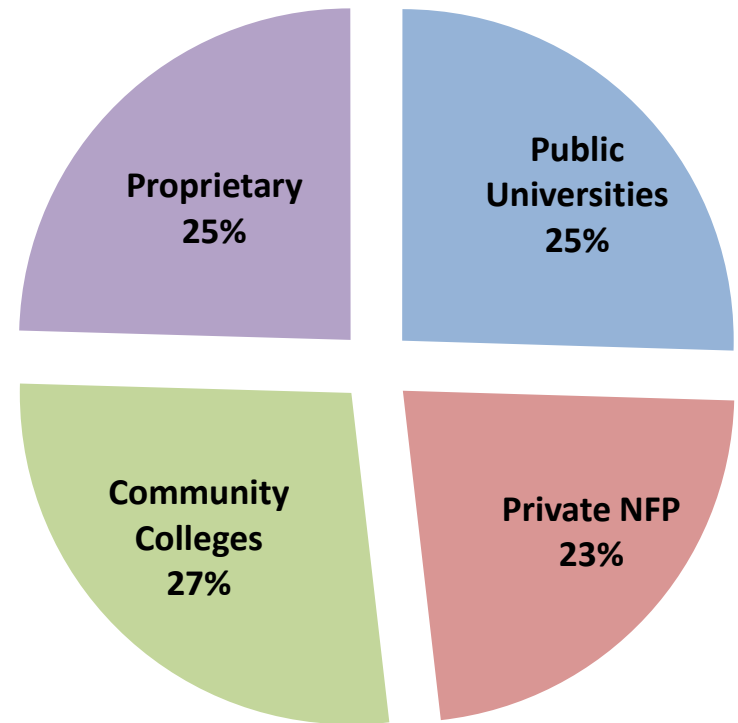


Grant Aid vs. Enrollment, 2015

All undergraduates, FTE

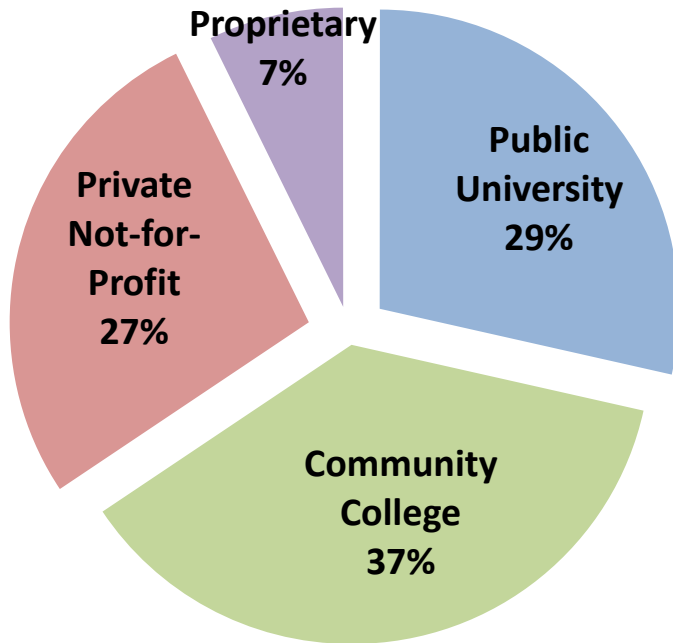


Pell and MAP Dollars



Grant Aid vs. Enrollment, 2015

All undergraduates, FTE



MAP Recipients

