

The Monetary Award Program

For over 50 years the Monetary Award Program (MAP) has provided Illinois residents financial assistance to attend Illinois colleges and universities. MAP grants are awarded based on financial need using information collected in the Free Application for Federal Student Aid (FAFSA). In FY12 the Illinois Student Assistance Commission (ISAC) awarded approximately \$420 million in grants assisting 147,000 Illinois students to continue their education.

Some propose reducing MAP funding by nearly 15% for academic year 2012-13.

Illinois faces real economic challenges and must reform its pension systems and Medicaid. Governor Quinn has proposed reductions in State spending to pre-2008 levels while increasing MAP by \$50 million. This would mean 175,000 MAP grants in the 2012-13 academic year.

Investment in higher education, particularly in college access for low-income students, is a down-payment on a healthy and prosperous future for Illinois.

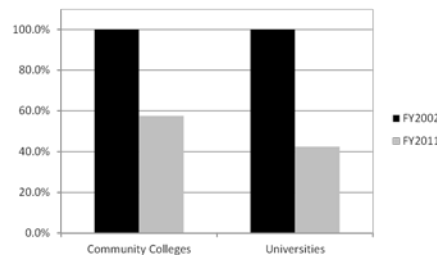
Without improving rates of college completion among low-income Illinoisans, a growing segment of the population, the Illinois workforce will not be adequately trained to fill the jobs of the future.

"As a non-traditional student, it can be difficult to afford college while having to pay all of the other living expenses that come with life. Thanks to the MAP Grant, my educational goals have become more attainable."

Kayla Randolph-Clark, Joliet Junior College

MAP currently serves only about half the applicants who are eligible and covers less than half of tuition and fees at a public university in this state. A decade ago, the State was able to meet the needs of all eligible applicants and fully cover tuition and fees.

MAP Buying Power Erosion: 2002 v. 2011



Illinois Student Advocacy Day

Save MAP Funding Rotunda Rally

April 19
10:00 am

Illinois State Capitol



MAP Matters

MAP provides need-based aid that a student does not have to repay, defraying tuition and fee costs and limiting excessive loan debt for students without the resources to pay for college. College costs have risen faster in recent years than any other sector of the economy, including health care.

More than half of MAP recipients are so low-income that the federal government doesn't consider them able to contribute any resources to pay for college.

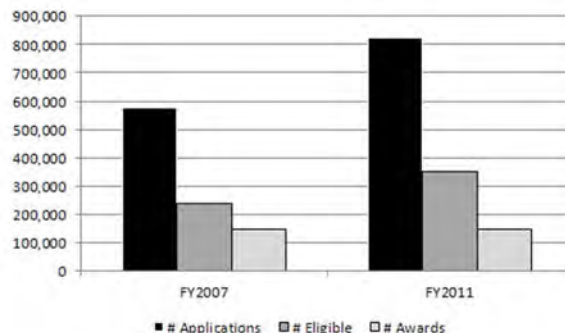
The average family income of a dependent ("traditional") MAP recipient in FY11 was \$31K.

The average income of an independent ("non-traditional") MAP recipient in FY11 was just \$16K.

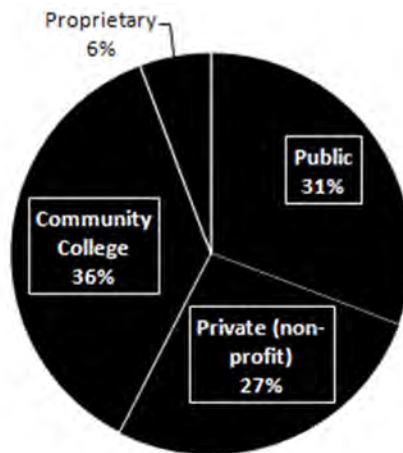
Reduced funding makes the MAP program less efficient – students take fewer hours, take longer to complete, run higher risks of not completing. The number one reason for dropping out is financial.

"Because of the MAP grant and other aid, I will no longer stand in a line waiting on someone to give me a fish. I will stand in a line waiting to buy a fishing boat so I can fish for myself and others."
- Lashondra Graves
Robert Morris University

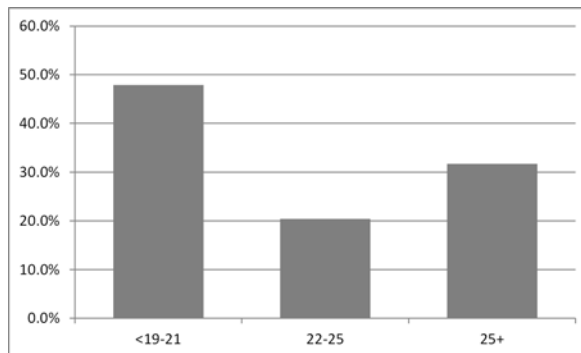
Demand for MAP Exceeds Current Funding



Recipients by Sector



MAP Grant Recipients by Age



MAP recipients are enrolled in all sectors of higher education, with the largest percentage of students in the community college sector.

MAP is a key factor in ensuring access to our public universities. Of the undergraduates at Illinois's public universities who identify themselves as Black or Hispanic, more than half receive a MAP grant.

Students who receive MAP graduate at the same rate as other students attending the same school.

Demand for aid has increased as the economy has slumped and higher education has become increasingly necessary for many jobs. This has led to increasingly early suspense dates for MAP.

About 147,000 students are receiving MAP grants during the 2011-12 school year. Under the current legislative budget, about 141,000 students would be expected to receive aid, with all grants likely reduced more than the current 5% reduction. Further proposed House cuts could mean even more drastic cuts to MAP.

If the Governor's requested FY13 increase for MAP were approved, about 175,000 students could be served at the current year's award levels.