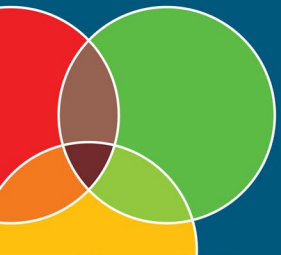


Welcome to the 2023 Illinois PaCE Symposium

Sara Espinosa, Manager, Training & Development, Illinois Student Assistance Commission

Ana Moya, Professional Development Specialist, Illinois Student Assistance Commission



Agenda

- Layout of the day
- Background of the Illinois PaCE Framework
- PaCE Resources





Layout of the day





Before we begin...

- This session will be recorded
- If you are having trouble connecting audio through your computer, use the “Call Me” option for audio
- We invite you all to use the chat feature to ask questions and interact with our presenters
- If your school or district is implementing a college and career readiness framework please share it with us by emailing it to ISAC.pace@illinois.gov





Schedule at a Glance

- Opening session: 9:00 am
- Break out 1: 10:00 am
- Break out 2: 11:00 am
- General Session: 12:00 pm
- There will be 10-minute breaks between each session





After the Symposium

- Continuing Education (CE) credits and Professional Development (PD) hours are available for the PaCE Symposium
 - In order to receive full credit for participation attendees must have attended at least 75% of the symposium
 - An ISBE evaluation and ISAC evaluation must be completed by **4:30PM Monday, May 15, 2023.**
 - Link to the evaluation will be shared during the general session





Background of the Illinois PaCE Framework





Background of PaCE

May 2016: As a result the Illinois House and Senate unanimously pass the Postsecondary and Workforce Readiness Act (HB 5729) which is made up of four components including PaCE

July 29th, 2016: Governor Rauner signs the bill into law and partners ISAC, ISBE, ICCB and IBHE in developing and establishing a system to ensure high school students are college and career ready

July 1st, 2017: Deadline for partner agencies to adopt and recommend a framework that outlines Postsecondary and Career Expectations (PaCE)

May 27th, 2022 Public Act 102-0917 signed into law and became effective January 1, 2023 which builds upon the PWR Act with a focus on PaCE and College and Career Pathway Endorsements

July 1st, 2023 The four state education agencies will adopt and publicize an updated Illinois PaCE Framework extended to 6th grade





Components of the PWR Act

The Postsecondary and Workforce Readiness (PWR) Act implements four student-centered, competency-based strategies:



Postsecondary & Career
Expectations (PaCE)



College & Career Pathway
Endorsements



Transitional
Instruction



Competency-Based
Education Pilot



Illinois PaCE Framework



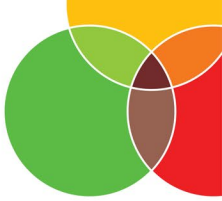
Illinois PaCE Postsecondary and Career Expectations

Each student should have an individualized learning plan to help make decisions about career and post-secondary (PS) education or training, to plan a course of study, and to make financial aid assessments with family members.

By the end of 8th grade	By the end of 9th grade	By the end of 10th grade	By the end of 11th grade	By the end of 12th grade
<p>A student should be supported to:</p> <ul style="list-style-type: none"> complete a career cluster survey attend a career exploration day complete a unit on education planning be exposed to a financial literacy unit in a course or workshop <p>A student should know:</p> <ul style="list-style-type: none"> the concept of career clusters of interest relationship between community service/extracurricular activities and postsecondary (PS)/career goals 	<p>A student should be supported to:</p> <ul style="list-style-type: none"> revisit career cluster interest survey and take a career interest survey complete an orientation to career clusters attend a PS options workshop meet with a counselor to discuss coursework and PS/career plans using the ISBE College and Career Readiness Indicators begin determining eligibility for advanced placement (AP) courses outline a plan for community service and extracurricular activities related to PS plans complete a financial aid assessment with a family member <p>A student should know:</p> <ul style="list-style-type: none"> one or two career clusters for further exploration and development the relationship between HS coursework, attendance, and grades to PS plans importance of community service and extracurricular activities to PS and career plans general cost ranges of various PS options 	<p>A student should be supported to:</p> <ul style="list-style-type: none"> visit at least one workplace aligned with career interests complete an orientation course to a particular career cluster or cluster grouping select a career pathway (CP) within a career cluster of interest begin determining eligibility for AP courses identify 2-3 adults to support the student through the PS and career selection process review coursework, and PS/career plans in relation to the ISBE College and Career Readiness Indicators (every year) attend a PS affordability workshop with a family member <p>A student should know:</p> <ul style="list-style-type: none"> educational requirements, cost, expected entry level, and midpoint salary for occupations in selected CP different types of PS credentials and institutions general timing of PS entrance exams and applications benefit of early college credit opportunities to PS access and completion 	<p>A student should be supported to:</p> <ul style="list-style-type: none"> revisit the career survey participate in a mock job interview create a resume and personal statement identify an internship opportunity related to the CP determine readiness for college-level coursework in either "catch up" or "speed up" course complete or enroll in at least one early college credit opportunity attend a college fair visit at least 3 PS institutions take at least one college entrance exam <p>A student should know:</p> <ul style="list-style-type: none"> application deadlines, test timing, cost, and preparation for industry-based certification for CP career attributes related to career interests entrance requirements, including application deadlines, for expected PS programs of study 3-5 match schools, one safety, one reach school for PS program of study negative impact of remediation on PS goals financial aid deadlines for chosen PS options 	<p>By 12/31 of 12th grade a student should have:</p> <ul style="list-style-type: none"> completed 3 or more admissions applications to PS institutions met with a school counselor to ensure all steps in the PS admissions process are completed on time attended a FAFSA completion workshop completed the FAFSA <p>By the end of 12th grade a student should be supported to:</p> <ul style="list-style-type: none"> address any remedial needs in math/ELA obtain an internship opportunity related to the CP if applicable, receive industry-based certification(s) related to the CP complete one or more team-based challenges or projects related to the CP attend a financial aid award letter workshop <p>A student should know:</p> <ul style="list-style-type: none"> how CP courses and experiences articulate to degree programs at PS options estimated cost of each PS option affordability of PS options in relation to expected entry-level career salary and anticipated debt terms and conditions of any scholarship or loan



Key Features of the PaCE Framework



ISBE, ICCB, IBHE, ISAC
7/1/2017

By end of 12th grade

By end of 11th grade

By end of 10th grade

By end of 9th grade

By end of 8th grade

- *A student should be supported to...*
- *A student should know...*
- *A student should have...*

Framework aligns with Illinois Social Science Learning Standards for Financial Literacy in grades 8-12 and Illinois Social Emotional Learning Standards grades 6-12

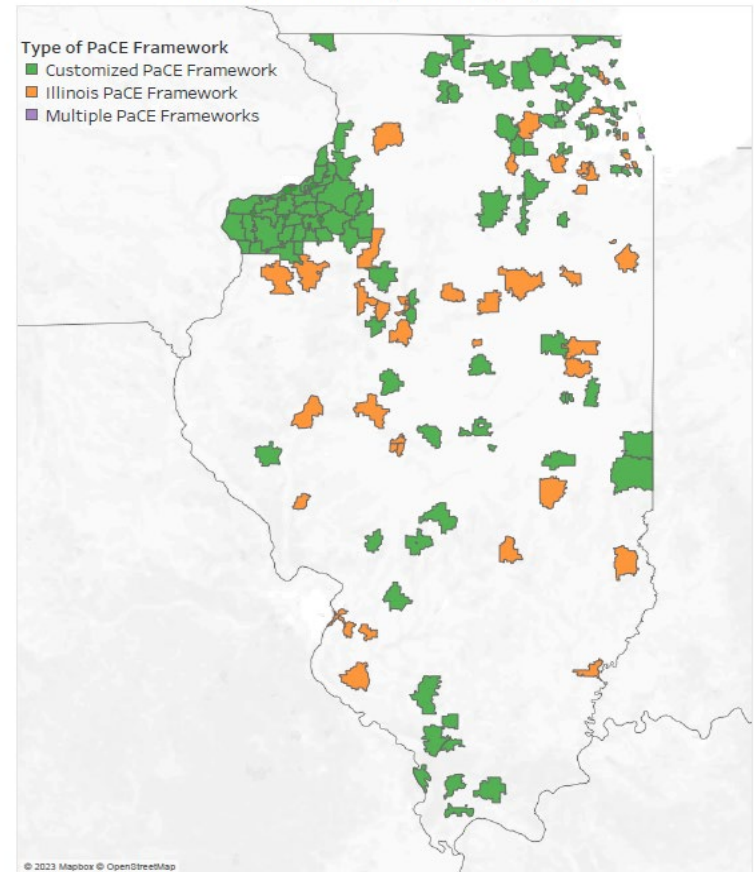




PaCE Frameworks Across the State

- ISAC has identified **136 schools and districts** who are implementing PaCE
 - 90 customized (31 w/ISAC)
 - 46 adopted Illinois PaCE
- We have created a repository of frameworks, available at www.isac.org/pace

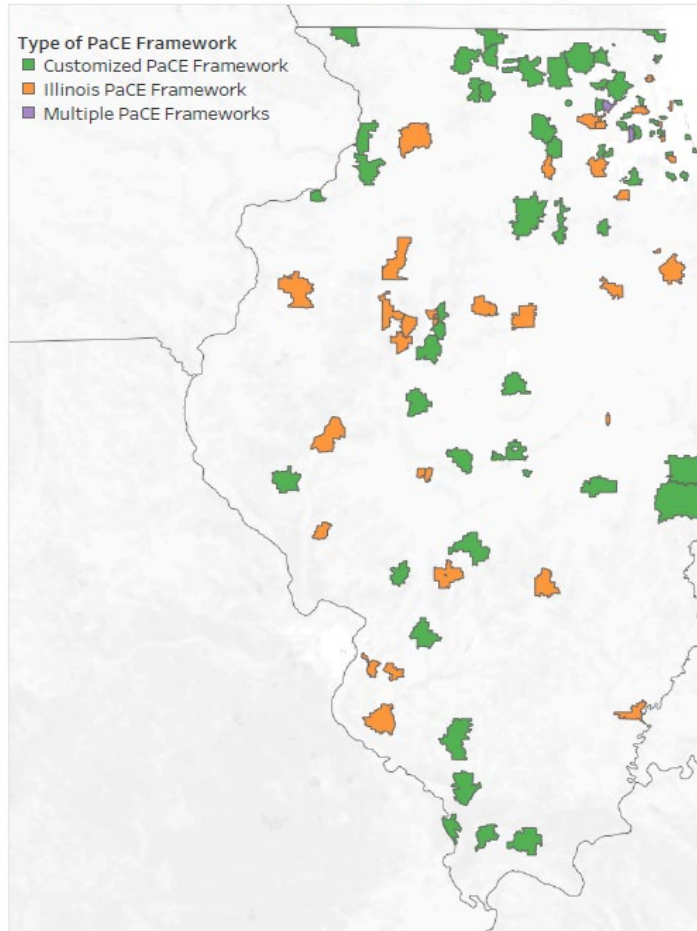
PaCE Implementation by ZIP Code Spring 2023



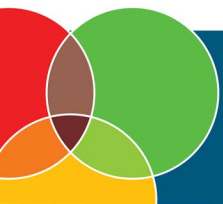
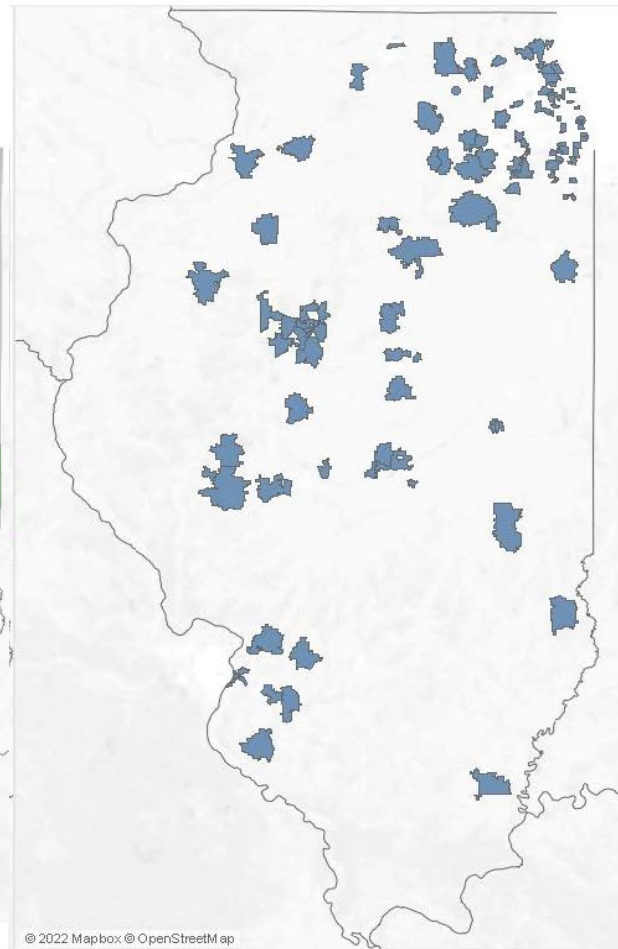
2022 Schools/Districts Implementing PaCE



PaCE Implementation by ZIP Code Spring 2022



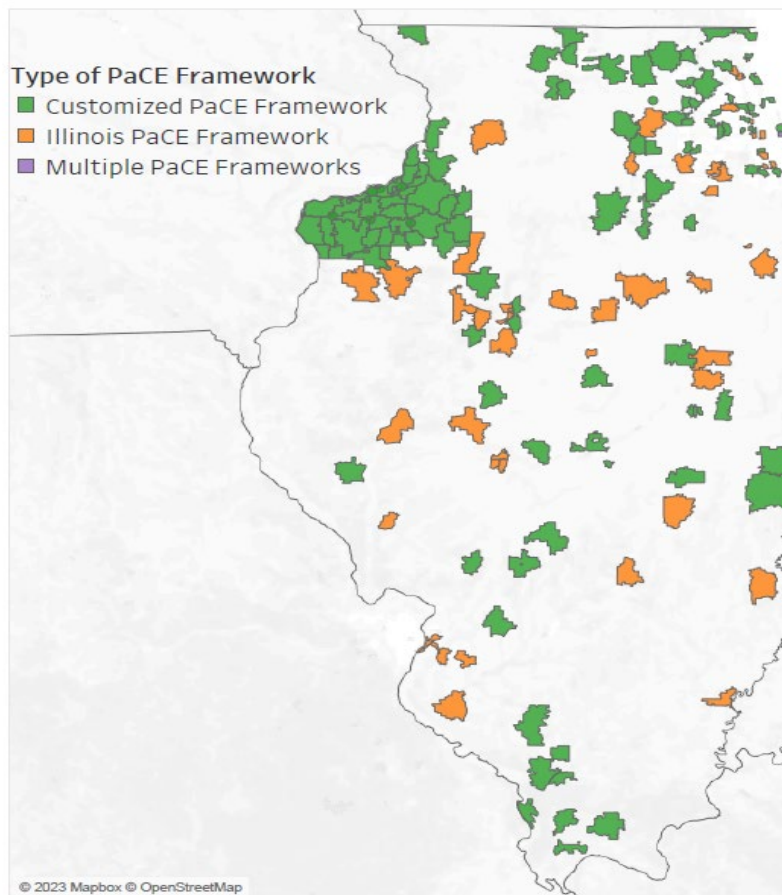
2022 PaCE Symposium Attendees



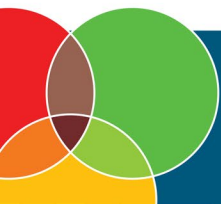
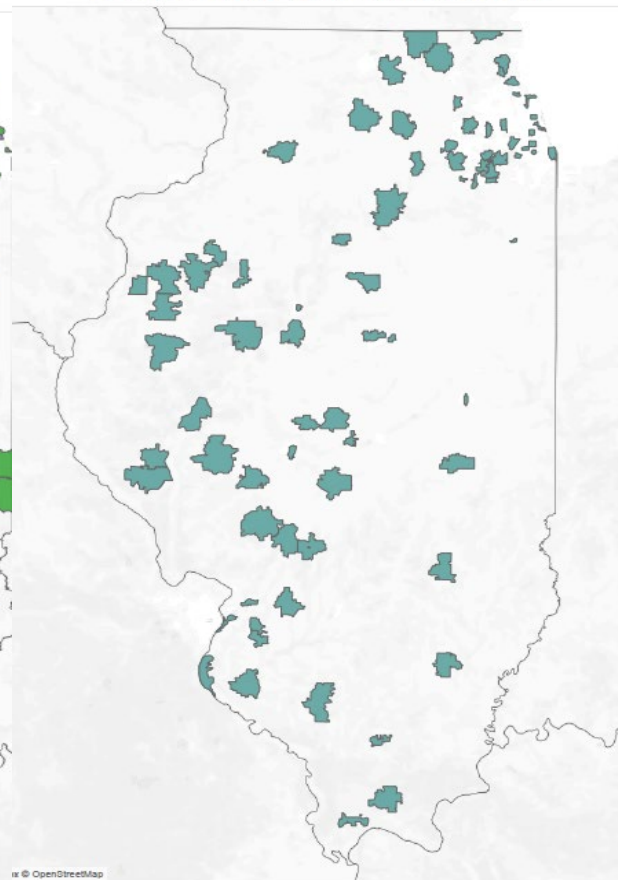
2023 Schools/Districts Implementing PaCE



PaCE Implementation by ZIP Code Spring 2023



2023 Virtual PaCE Symposium Attendee ZIP Codes



Reporting PaCE Framework Implementation



GAP ACCESS ISAC Gift Assistance Programs TEST TEST JB Pritzker, Governor, State of Illinois

School Administration Programs

School: Add/Edit School Information

School Demographics

Demographic Information

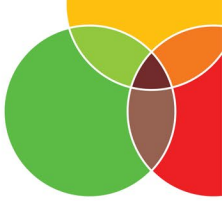
School Level High School	Address 1 1925 NORTH ROUTE 83	FEIN	Is your school currently implementing/using a college and career readiness plan? (Select one from drop-down menu.) <input type="text"/> Other College and Career Readiness Plan Illinois PaCE Framework Customized PaCE-aligned Framework None
* School Code 142126	Address 2	Phone 1(847)-986-3100	
* School Name GRAYSLAKE NORTH HIGH SCHOOL	City GRAYSLAKE	Email	
School Name Long	* State IL	Fax	
School Type	Zip 60030-0000	Web Site	
Highest Degree Granted	US Congressional District	<input type="checkbox"/> IPTIP Indicator	
	State Senate District	Grade Levels -	
	State Representative District		

Created by CONVERT on 06/18/2013

- High School Specific Data
- School Contacts
- School Programs
- School Performance

Save **Cancel**





PaCE Resources





PaCE Resources

- PaCE Supports
- PaCE Framework Template
- PaCE Student Checklist
- On PaCE to Thrive Community Guide
- PaCE Implementation Guide
- Illinois Career Pathways Dictionary



PaCE Framework Development Workshop



- Facilitated process of customizing a PaCE Framework
- Only for schools/districts customizing a framework
- 2-3-hour timeframe
- Framework Development Team is required to schedule a workshop
- Workshop outcomes:
- Copy of customized PaCE framework formatted to match the Illinois PaCE Framework
- Customized PaCE implementation worksheets
- Continued ISAC Support



PaCE Implementation Support



- Series of three, one-hour meetings with ISAC and the school/district implementation team
- Work with the implementation team to understand and complete the Take an Inventory, Prioritize Gaps, and Action Plan worksheets
- Upon completion of the meetings, the school/district implementation team will be equipped to implement their framework – Illinois PaCE or PaCE-aligned framework



PaCE Implementation Leader Training



- While implementing PaCE is a team effort, having a team leader helps to keep the PaCE implementation efforts on track
- Leaders serve as liaisons between ISAC and the implementation team
- PaCE Implementation Leader Training provides:
 - An in depth understanding of all the steps involved in the PaCE implementation process
 - Best practices for implementation
 - Knowledge of PaCE resources that help support the PaCE benchmarks

PaCE Support Request

- Available online at isac.org/pace/pace-request-form



PaCE Support Request

To request Postsecondary and Career Expectations (PaCE) support, return a completed PaCE Support Request Form no more than six (6) months and no less than four (4) weeks prior to the event. At this time, all support options are being held virtually until further notice.



PaCE Support Request Form

Event Name: *

Is this request for virtual or in-person support? *

- Virtual
 In-Person

Event Contact *

First

Last

Title *

School/Organization *

School/Organization Address

Street Address *

City *

State *

Zip Code *

Email *

Phone Number *

 - -

####





ISAC's e-Messaging

Sign up for ISAC's e-messaging service to receive the latest news and updates at www.isac.org/emessaging





Financial Aid Application Completion Initiative

- High schools can track the FAFSA, Alternative Application, and Opt-out waiver completion in Gift Assistance Program (GAP) Access
- Schools can view class of 2023 data – updated everyday!
- Use the ISAC roster for ISBE compliance

The screenshot shows the 'FAFSA Completion: Details Graduation Year 2021' page. It includes a 'School Summary' section with contact information for 'Some High School-12345' and a table of student records. The table columns are: Select, Opt Out Waiver, Last Name, First Name, MI, DOB, FAFSA Status, Initial FAFSA Received Date, and MAP Elig @1st Choice College. The table contains 10 rows of student data.

Select	Opt Out Waiver	Last Name	First Name	MI	DOB	FAFSA Status	Initial FAFSA Received Date	MAP Elig @1st Choice College
<input type="checkbox"/>	<input type="checkbox"/>				K 07/24/2003	Filed, has EFC	10/09/2020	N
<input type="checkbox"/>	<input type="checkbox"/>				A 02/17/2003	Filed, has EFC	12/09/2020	N
<input type="checkbox"/>	<input type="checkbox"/>				04/26/2003	No FAFSA Filed		
<input type="checkbox"/>	<input type="checkbox"/>				T 06/12/2003	Filed, has EFC	01/31/2021	
<input type="checkbox"/>	<input type="checkbox"/>				P 11/03/2002	Filed, has EFC	10/03/2020	
<input type="checkbox"/>	<input type="checkbox"/>				E 03/30/2003	Filed, has EFC	10/10/2020	
<input type="checkbox"/>	<input type="checkbox"/>				08/31/2003	Filed, has EFC	10/03/2020	
<input type="checkbox"/>	<input type="checkbox"/>				G 06/15/2003	Filed, has EFC	11/08/2020	N
<input type="checkbox"/>	<input type="checkbox"/>				02/01/2003	Filed, has EFC	10/24/2020	



<https://www.isac.org/home/fafsa/index.html>



First Generation Scholars Network

- Join ISAC's community of students who are first in their family to go to college!
- Receive additional support year-round from the ISACorps
- Live and virtual events throughout the state
- Engage with professionals who are also first-generation students and graduates

Join the Network
Ready to join?
You can join using our online form

JOIN NOW!

Have questions? Email us at ISAC.FirstGen@illinois.gov

<https://studentportal.isac.org/FirstGen>

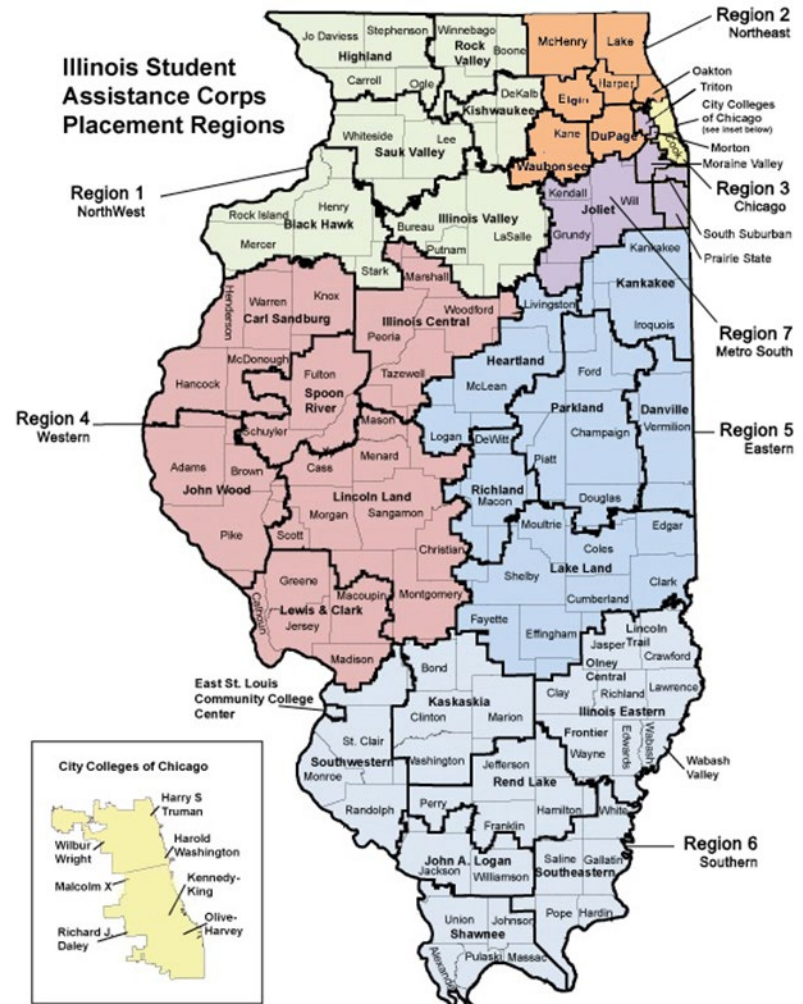


Join the ISACorps Team!

- Work full-time as a professionally trained post-secondary mentor to help the next generation plan for life after high school
- Positions available statewide
- \$35,604/year plus benefits
- Extensive paid training
- Qualifications:
 - Bachelor's degree
 - Within 6 years of H.S. graduation
 - Willing to commit 2 years
 - Access to vehicle

Job description & Application:

<https://www.isac.org/about-isac/employment/>





Thank You

Questions?

Email us at isac.pace@Illinois.gov

